



#### BLACKBUTT - VENEERED TIMBER TOP

Our timber table tops are expertly manufactured in-house to your specifications.

We offer customisation of sizing, edge profiles and staining.

Veneered timber, pressed atop an MDF or plywood substrate.  
Available in several thickness options.

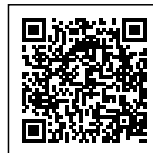
#### Colours

- Pale brown, some variations display slight pinkish tinge
- Paler zones common

#### Grain detail

- Texture medium and even
- Grains mostly linear
- Gum veining common

Hospitality Furniture Concepts proudly uses sustainably and responsibly sourced timber species in our manufacturing.





Hospitality  
Furniture  
Concepts



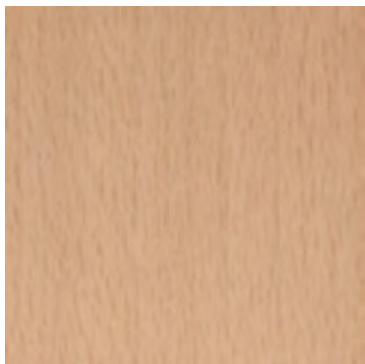
#### ADDITIONAL INFORMATION

**Leadtime** [2 - 4 weeks](#)  
**Material** [Timber](#)

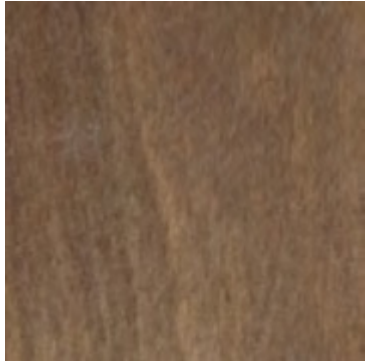
#### Timber Stains



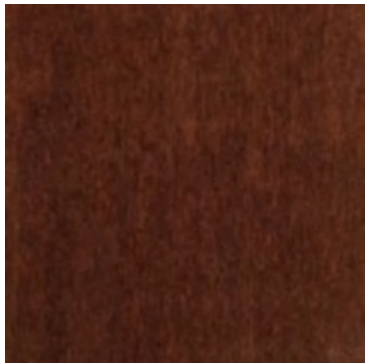
000 White Wash



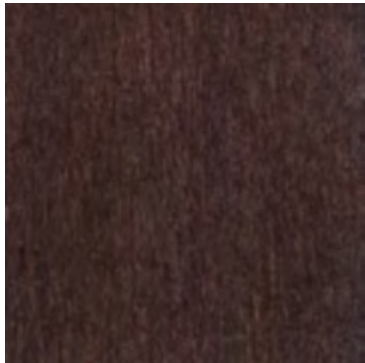
100 natural



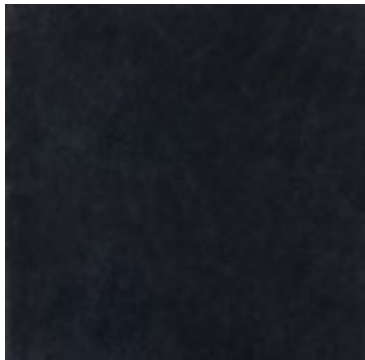
046 light walnut - rustical



014 mahogany



151 dark walnut - brown



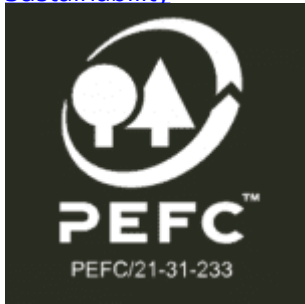


063 black



041 grey

#### Sustainability



PEFC – Programme for Endorsement of Forest Certification Schemes

PEFC™/21-31-233



AFS – Australian Forestry Standard  
AFS/01-31-233





Forest Stewardship Council Certification (FSC)  
FSC® C113479

## **Recent Projects - using Timber Table Tops**



Hospitality  
Furniture  
Concepts



**Brewdog, South Eveleigh**

Hospitality, Brand, Zaneti







Hospitality  
Furniture  
Concepts



**MISC Parramatta (NSW)**

Hospitality, Brand, Zaneti





Hospitality  
Furniture  
Concepts



### The Tote – Moonee Valley Racing Club

Hospitality, Brand, Zaneti

### Related Blog Content





### [The Ultimate Guide to Compact Laminate: Durable, Versatile, and Stylish](#)

When it comes to designing and furnishing spaces, whether for commercial, public, or hospitality use, [...]

03  
Oct



### [Elevate Your Dining Experience with Sustainable Timber Table Tops](#)

In the world of hospitality, creating a warm and inviting dining atmosphere is essential for [...]

03  
Oct



### [Elevate Your Hospitality Venue with Versatile Table Bases](#)

In the world of hospitality, creating an inviting and aesthetically pleasing atmosphere is essential. Whether [...]

03  
Oct

## Base Pairing Ideas



[Quick View](#)

Tables



[Pirelli Table Base – Small](#)



[Quick View](#)

Table Bases

[Colorado Table Base \(Brushed Brass Variants\)](#)





[Quick View](#)

Designer Table Bases

[Arki](#)

[Pedrali](#)



[Quick View](#)

Gaber

[Roller Table](#)

[Gaber](#)



[Quick View](#)

Drybars

[Bistro Dry Bar](#)



[Quick View](#)

Designer Table Bases

[Concrete 1100](#)

[Pedrali](#)



### [Quick View](#)

Designer Table Bases

### [Kon](#)

Our timber table tops are expertly manufactured in-house to your specifications.

We offer customisation of sizing, edge profiles and staining.

Veneered timber, pressed atop an MDF or plywood substrate.  
Available in several thickness options.

### Colours

- Pale brown, some variations display slight pinkish tinge
- Paler zones common

### Grain detail

- Texture medium and even
- Grains mostly linear
- Gum veining common

Hospitality Furniture Concepts proudly uses sustainably and responsibly sourced timber species in our manufacturing.



Hospitality  
Furniture  
Concepts