



#### INFINITI BOOTH

Infiniti creates inviting and aesthetic social clusters for dining spaces through its versatile, rounded modular structure built to surround any sized table.

The outer frame of the Infiniti is comprised of sturdy hardwood internals clad with laminate and finished with a brushed metallic laminate kicker. The backrest is fixed to the inner lining, creating a clean "floating" appearance. The Infiniti can be configured in a half-circle design for greater access, or to further surround the central table for greater seating capacity ("horseshoe" shape). Each unit's overall length (and, by extension, its circumference) will depend upon the diameter of the central table it surrounds.

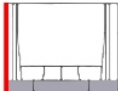
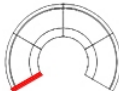

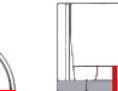
#### How it works

Create a truly unique interior for your space through our custom booth and banquette manufacturing process, where we will assist you in finding the perfect seating solution. Each design carries specific unit lengths, which can be lengthened and customised to suit any application.

To get started, we'll need to know:

- Your selected **booth style**;
- The intended seating capacity/**configuration** of the space;
- Your personal touches, selected from available **upholstery** and **framing finishes** (see below).

#### Standard unit dimensions

			
<b>Height</b>	<b>Depth</b>	<b>Unit length</b>	<b>Seat height</b>
1000 mm	650 mm	Custom	450 mm

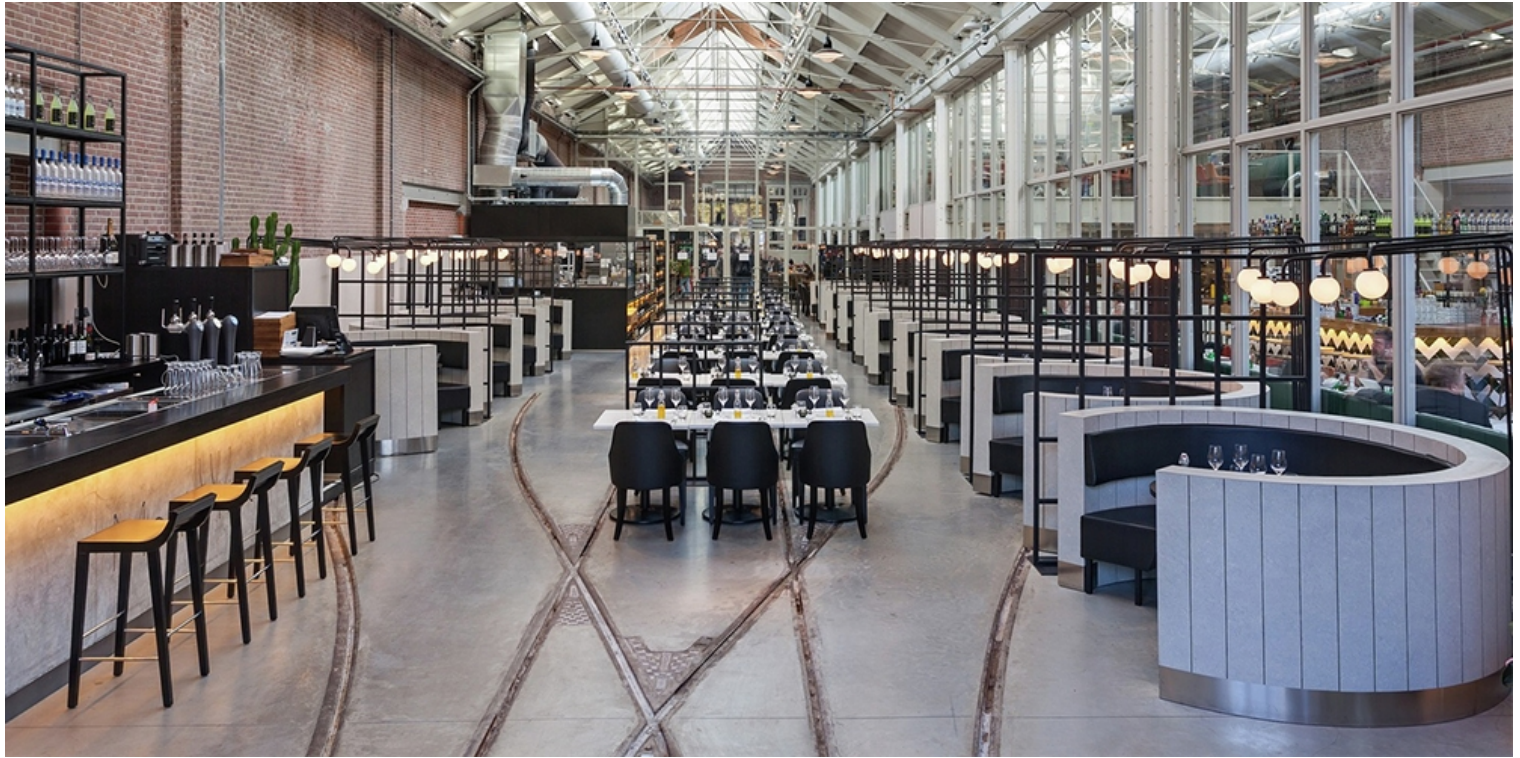






#### ADDITIONAL INFORMATION

Leadtime	<a href="#">5 – 6 weeks</a>
Material	<a href="#">Upholstered</a>
Price	<a href="#">More than 500</a>







infiniti-booth-2  
infiniti-booth-1  
infiniti-booth-3



## Recent projects - using Booth Seating



Hospitality  
Furniture  
Concepts



**MISC Parramatta (NSW)**

Hospitality, Brand, Zaneti





Hospitality  
Furniture  
Concepts



### The Tote – Moonee Valley Racing Club

Hospitality, Brand, Zaneti





Hospitality  
Furniture  
Concepts



## Grill'd Plenty Valley

Hospitality





Hospitality  
Furniture  
Concepts



## Bellboy Café

Hospitality, Brand, Zaneti

## Related Blog Posts





### [Maximizing Comfort and Style: Your Guide to Banquette Seating Options](#)

Banquette seating, commonly seen in restaurants and cafes, refers to custom upholstered seating units, often [...]

04  
Oct



### [The Art of Choosing Fabrics: When and How to Use Leather, Vinyl, Crypton, and More](#)

In the world of interior design and upholstery, fabric selection plays a pivotal role in [...]

03  
Oct



### [Elevate Your Hospitality Venue's Comfort and Style with Custom Booth Seating](#)

In the world of hospitality, creating a memorable and inviting dining experience is paramount. The [...]

03  
Oct

Infiniti creates inviting and aesthetic social clusters for dining spaces through its versatile, rounded modular structure built to surround any sized table.

The outer frame of the Infiniti is comprised of sturdy hardwood internals clad with laminate and finished with a brushed metallic laminate kicker. The backrest is fixed to the inner lining, creating a clean "floating" appearance. The Infiniti can be configured in a half-circle design for greater access, or to further surround the central table for greater seating capacity ("horseshoe" shape). Each unit's overall length (and, by extension, its circumference) will depend upon the diameter of the central table it surrounds.

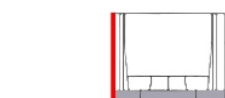
#### How it works

Create a truly unique interior for your space through our custom booth and banquette manufacturing process, where we will assist you in finding the perfect seating solution. Each design carries specific unit lengths, which can be lengthened and customised to suit any application.

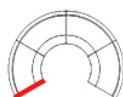
To get started, we'll need to know:

- Your selected **booth style**;
- The intended seating capacity/**configuration** of the space;
- Your personal touches, selected from available **upholstery** and **framing finishes** (see below).

#### Standard unit dimensions



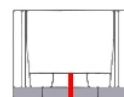
**Height**  
1000 mm



**Depth**  
650 mm



**Unit length**  
Custom



**Seat height**  
450 mm



Hospitality  
Furniture  
Concepts