



EDGE - HEIGHT ADJUST

Unlock the potential of a healthier and more dynamic workspace with the cutting-edge "EDGE" Sit-Stand Desk Frame. Crafted for ultimate performance, this revolutionary desk frame combines intelligent engineering, sleek design, and innovative features to help you elevate your productivity, comfort, and overall well-being.

The "EDGE" desk frame combines advanced engineering and innovation to redefine your workspace:

1. **Effortless Adjustability:** The LED-equipped button-press controller offers seamless height customization. Four memory settings streamline your work experience.
2. **Unparalleled Power and Stability:** Dual motors ensure strong lifting capacity and steadfast stability at any height.
3. **Safety Assured:** Our collision avoidance system prioritizes your safety.
4. **Tailored to Your Needs:** Three column stages provide superior adjustability.
5. **Versatile Compatibility:** Adjustable width fits various desktop shapes and sizes.
6. **Steady on Any Surface:** Adjustable feet adapt to any floor.
7. **Swift Elevation:** Quick 1.5" per second height adjustment.
8. **Quality Assurance:** Backed by a three-year warranty.







ADDITIONAL INFORMATION

Leadtime	12 weeks +
Linking	Yes
Price	More than 500

Screen

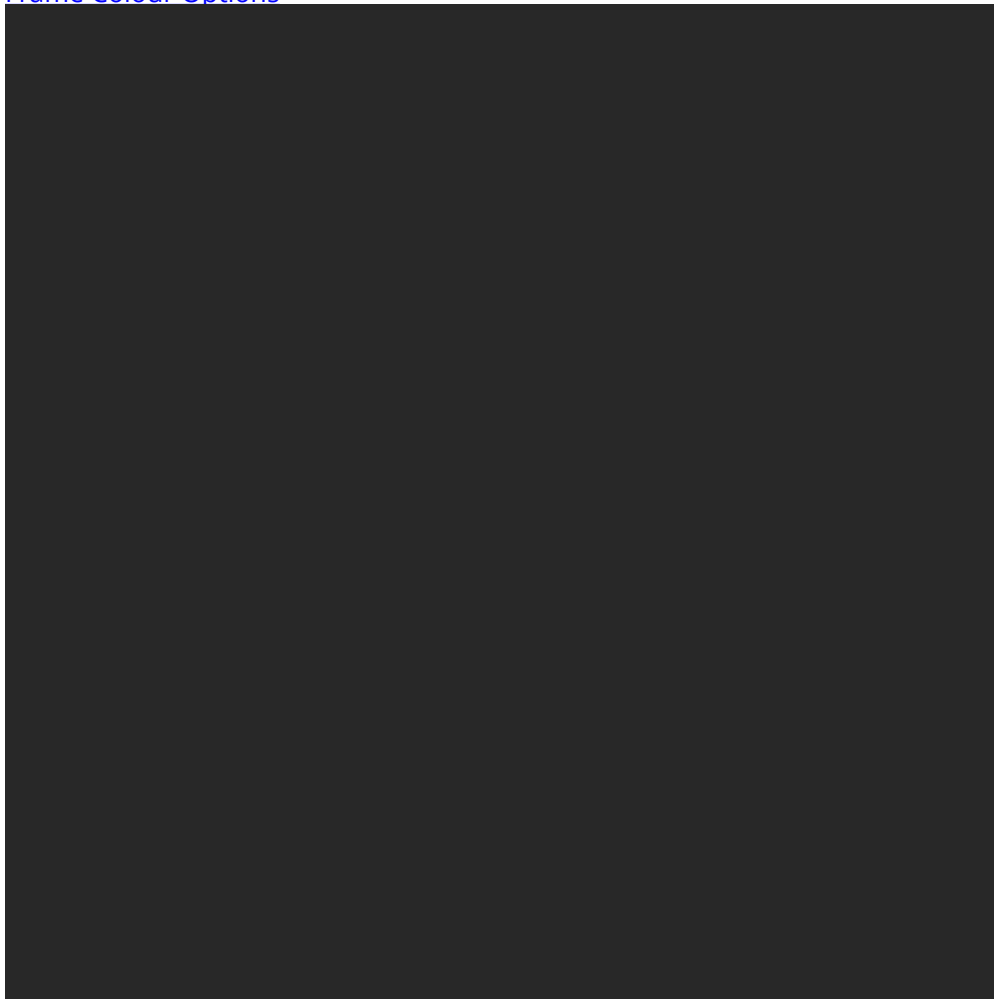


Length: 1190, 1390, 1490, 1590mm



With: 650mm

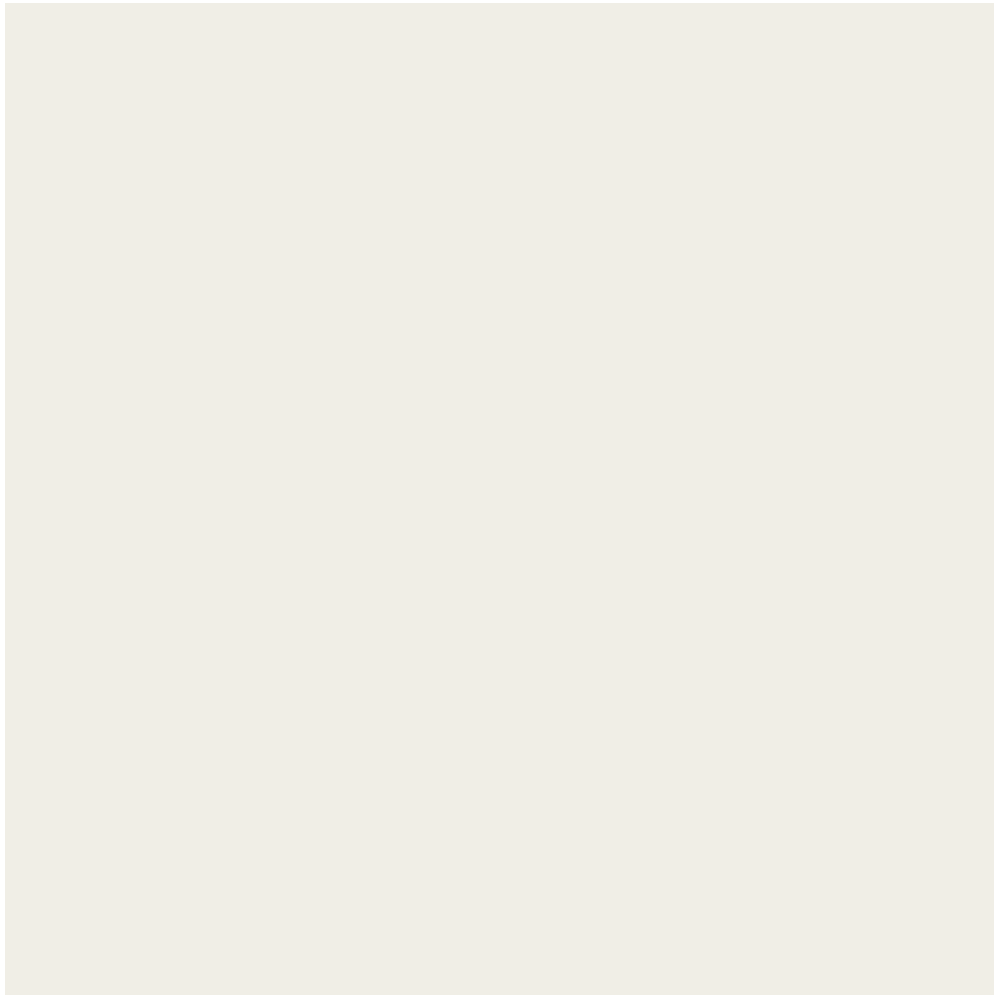
[Frame Colour Options](#)



Black (RAL9005)



Grey (RAL9006)



White (RAL9016)

[Top Finishes - Melamine](#)



Hospitality
Furniture
Concepts



Hospitality
Furniture
Concepts



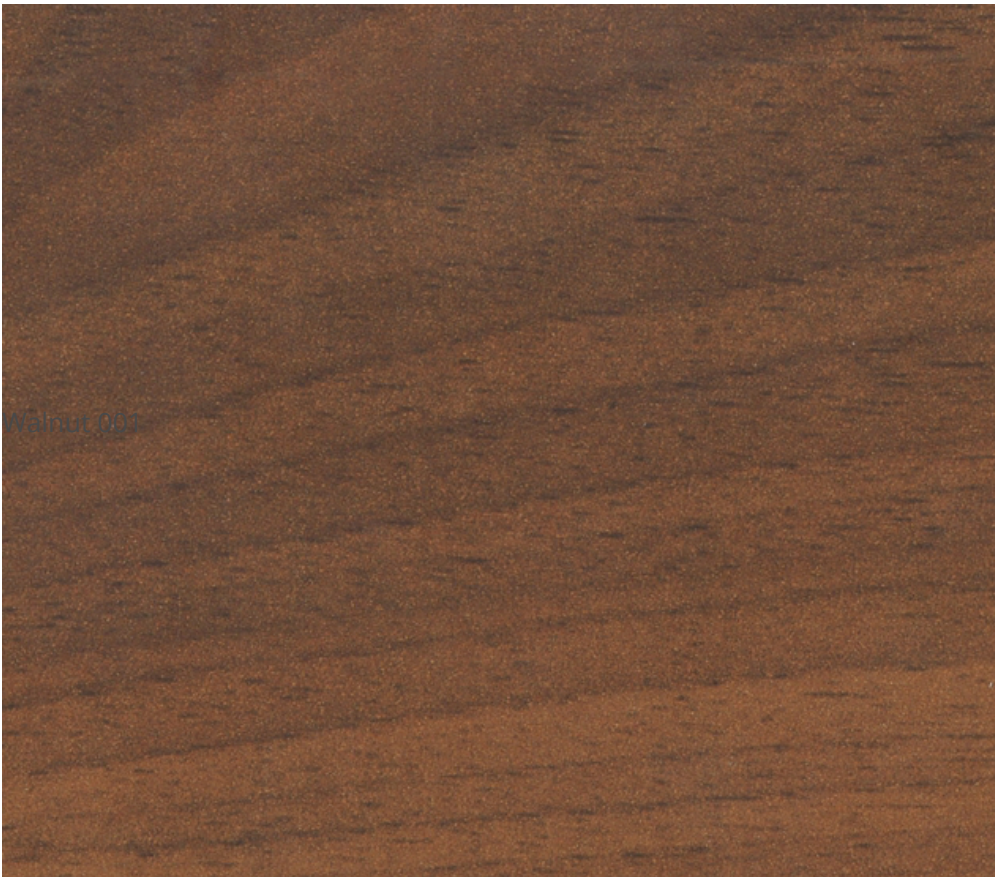
Dark Walnut



Hospitality
Furniture
Concepts



Hospitality
Furniture
Concepts



Walnut 001



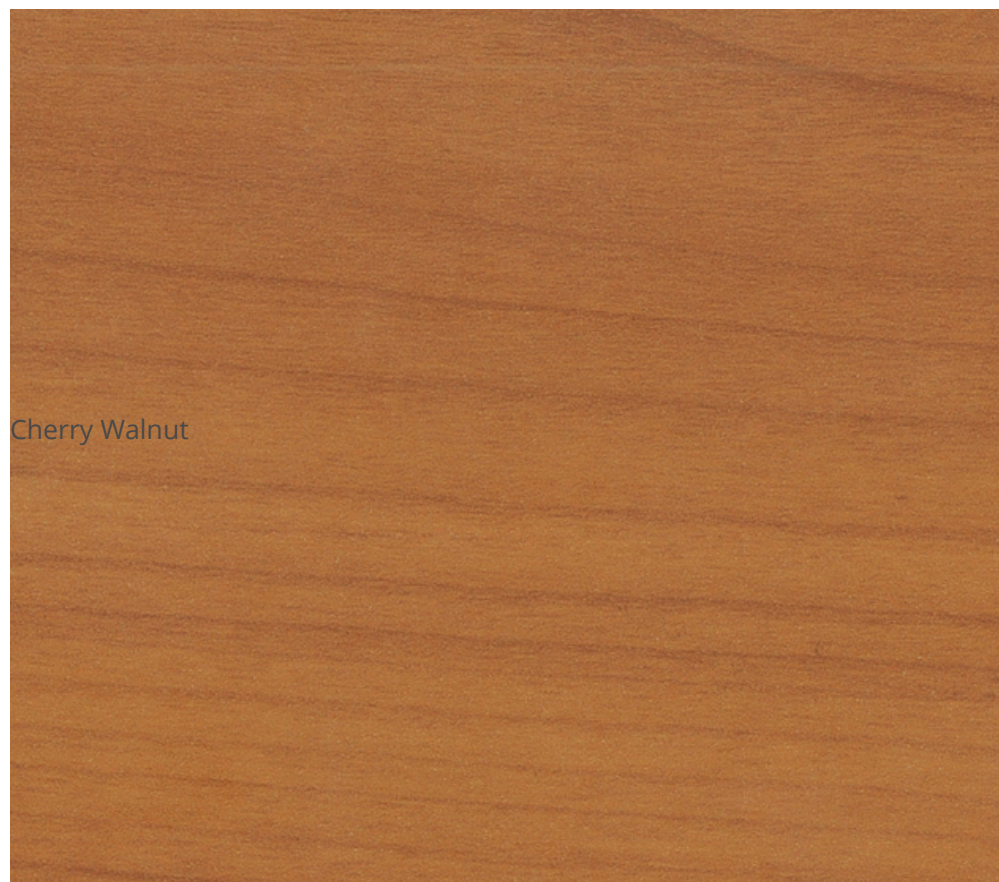
Light Walnut



Hospitality
Furniture
Concepts



Hospitality
Furniture
Concepts



Cherry Walnut



Oak



Hospitality
Furniture
Concepts



Hospitality
Furniture
Concepts



Ash





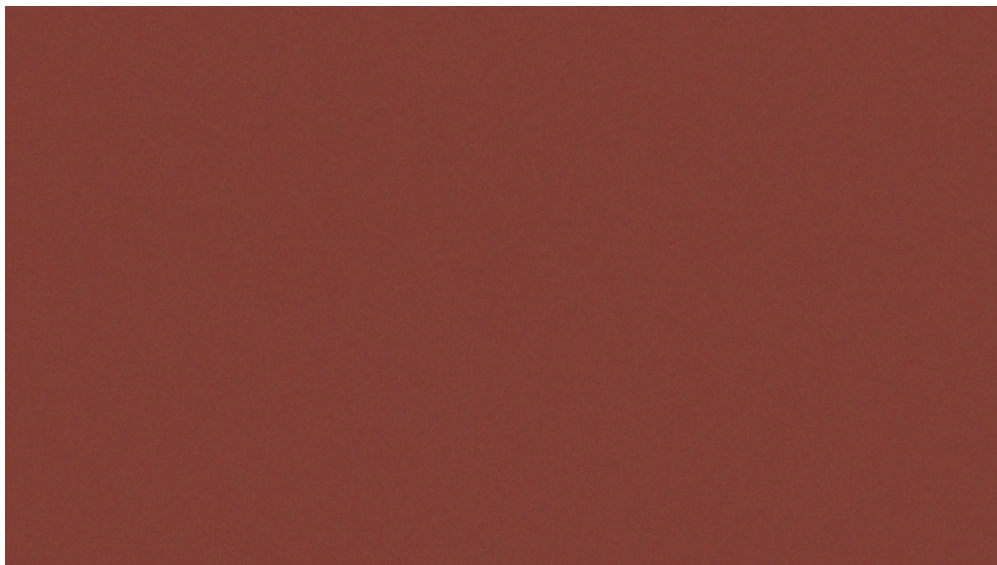
Vic Ash



Light Wood



Ash



Crimson



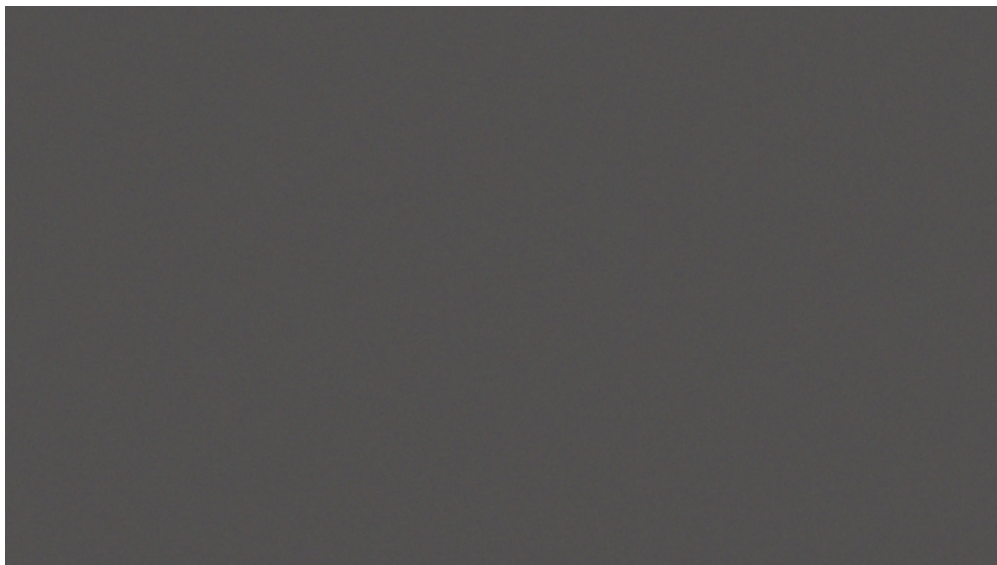
Orche



Blé



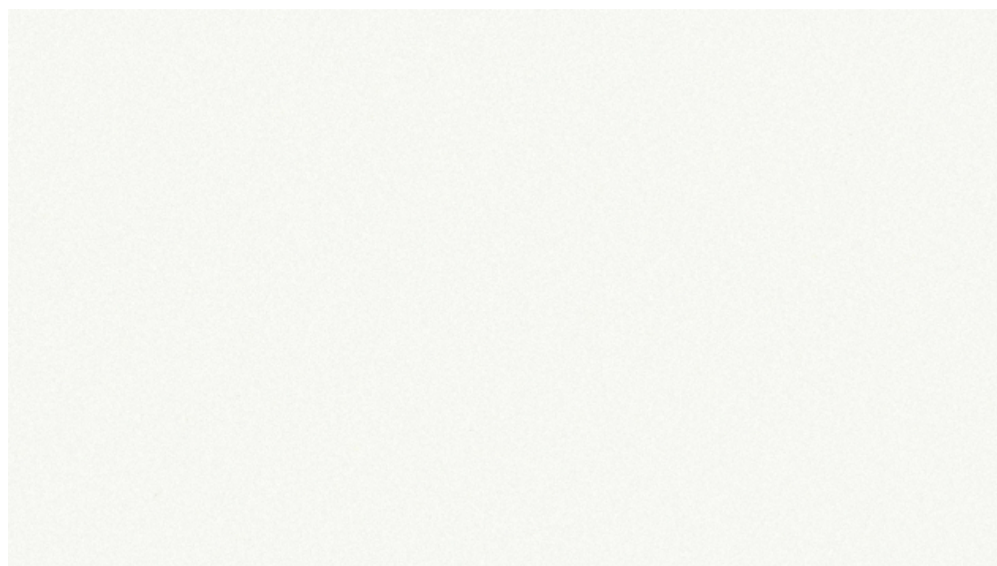
Earth



Grey



Light Grey



White



Hospitality
Furniture
Concepts



Hospitality
Furniture
Concepts



Black

[Monitor Arms](#)



Single or Dual Monitor Arms

[Specifications](#)

Product style: Dual motor electric lift table

Input voltage: 110V AC or 220V AC

Lifting range: 630-1300mm

Maximum load: 120KG

Noise decibel: ≤50dB

Desktop size: 1200-1600X600-700mm

Product weight: 34KG



Telescopic beam: 1085-1800mm

Component matching: cable trough, socket, snake tube, keyboard tray

[Integrated Technology](#)







Above desk power





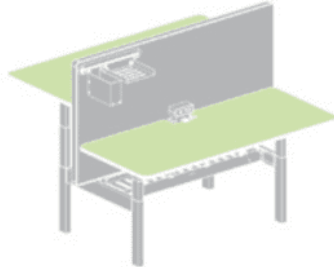


Wireless Charging

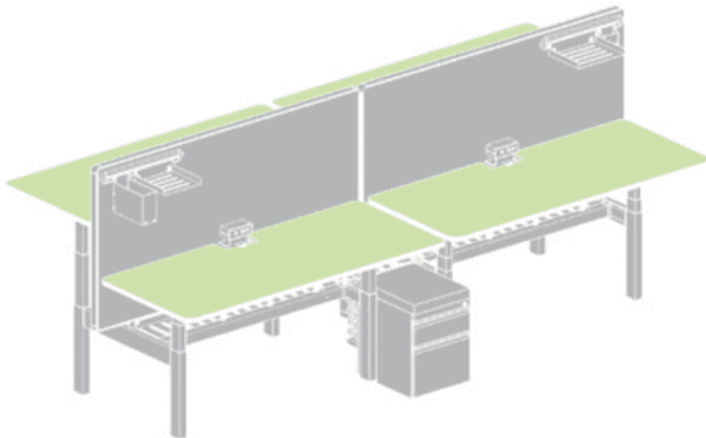
Customisation



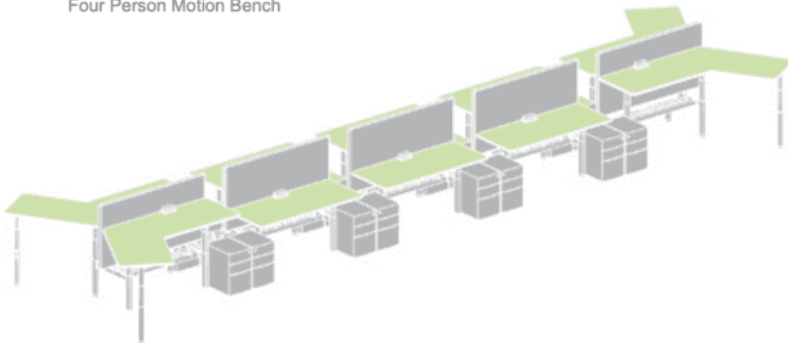
Single Motion Table



Two Person Motion Desk



Four Person Motion Bench



120 Angle Motion Bench

Typical Sizes

180 Degree Single



Length Range: 900-2700mm
1200-2400mm (Electric Adjust)

Depth Range: 600-900mm

90 Degree - Single



Length: 1400 or 1500mm
Width: 600 or 700mm

120 Degree - Single



Length: 1400 or 1500mm
Width: 600 or 700mm

180 Degree - Single



Length Range: 900-2700mm
1200-2400mm (Electric Adjust)

Depth Range: 600-900mm

180 Degree - Back to Back



Length Range: 900-2700mm
1200-2400mm (Electric Adjust)

Depth Range: 600-900mm

Pod - Back to Back



Length Range: 900-2700mm
1200-2400mm (Electric Adjust)

Depth Range: 600-900mm

Pod: 4-6

[Screen Finishes](#)



Unlock the potential of a healthier and more dynamic workspace with the cutting-edge "EDGE" Sit-Stand Desk Frame. Crafted for ultimate performance, this revolutionary desk frame combines intelligent engineering, sleek design, and innovative features to help you elevate your productivity, comfort, and overall well-being.

The "EDGE" desk frame combines advanced engineering and innovation to redefine your workspace:

1. **Effortless Adjustability:** The LED-equipped button-press controller offers seamless height customization. Four memory settings streamline your work experience.
2. **Unparalleled Power and Stability:** Dual motors ensure strong lifting capacity and steadfast stability at any height.
3. **Safety Assured:** Our collision avoidance system prioritizes your safety.
4. **Tailored to Your Needs:** Three column stages provide superior adjustability.
5. **Versatile Compatibility:** Adjustable width fits various desktop shapes and sizes.
6. **Steady on Any Surface:** Adjustable feet adapt to any floor.
7. **Swift Elevation:** Quick 1.5" per second height adjustment.
8. **Quality Assurance:** Backed by a three-year warranty.



BRAND

HFC Design Lab

At the heart of our offerings lies the fusion of luxury and accessibility through our 'HFC Design Lab.' This specialized line showcases a curated selection of meticulously crafted furniture pieces, embodying the quintessential Italian style while being accessible to a broader audience. Driven by a passion for design excellence, each item within our HFC Design Lab collection is a testament to our commitment to quality, durability, and aesthetic finesse. Whether you seek the opulence of our high-end Italian furniture or the contemporary allure of our HFC Design Lab range, every piece is crafted with precision, reflecting unparalleled artistry and innovation. With a dedication to elevating commercial spaces worldwide, we invite you to explore our diverse catalogue, where luxury meets affordability without compromise. Experience the essence of Italian-inspired design with HFC, where every piece tells a story of timeless sophistication and impeccable craftsmanship.