



#### FERRAGO - MD

1. **Back & Seat Sponge**

- High-density PU, cold-foam molded to prevent long-term distortion.
- Back density: 55 kg/m<sup>3</sup>
- Seat density: 60 kg/m<sup>3</sup>

2. **Back & Seat Cover**

- Premium deformation-resistant high-density hard plywood.
- Processed with high-standard treatment techniques.

3. **Fabric**

- Premium fabric that resists stains and discoloration.

4. **Legs**

- Constructed from 2.5 mm high-quality steel plate.
- Mold stamped and polished for durability and aesthetics.

5. **Handrails**

- Made from high-quality multi-layer board.
- Polished and sprayed multiple times.
- Assembled into an overall frame with a built-in iron frame over 3 mm thick.
- Painted with high-quality paint and available with fabric upholstery options.

6. **Armrest Cover**

- Made from imported timber with an external polyester coating.

7. **Tablet**

- MDF writing board with high-quality wood veneer.
- Polished and sealed with paint five times using Dabao paint from Taiwan.
- Thickness: 15 mm

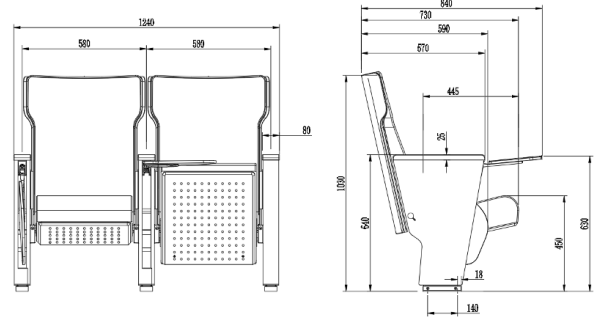
8. **Cushion Recovery**

- Spring plus damping mechanism for noise-free operation.

9. **Screws**

- Steel hexagon socket cap screws and expanding nuts for secure assembly.

**Dimensions:** (580+80=660) \* 840 \* 1030 mm





## Upholstery options





## Upholstery options

[Download](#)

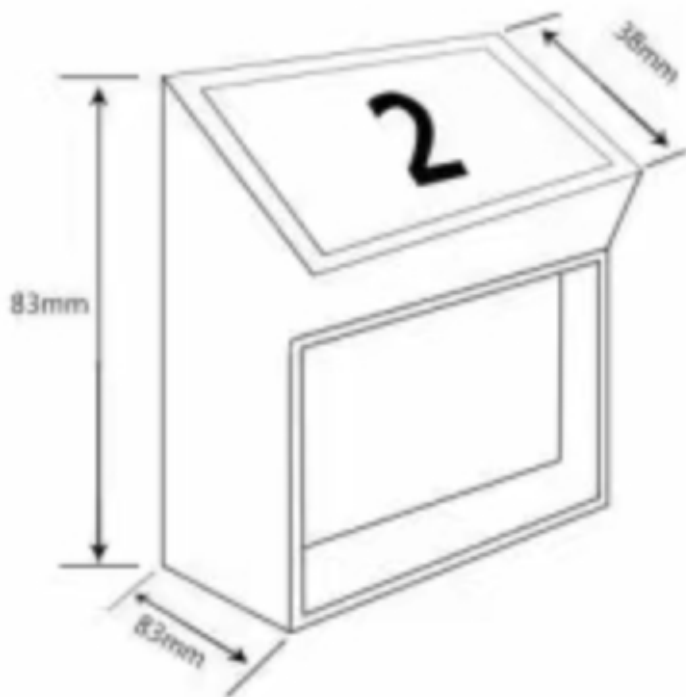
## CAD Support

- Request CAD file
- Need support with optimising a layout, let us know

## Options



Seat number



Aisle number with light

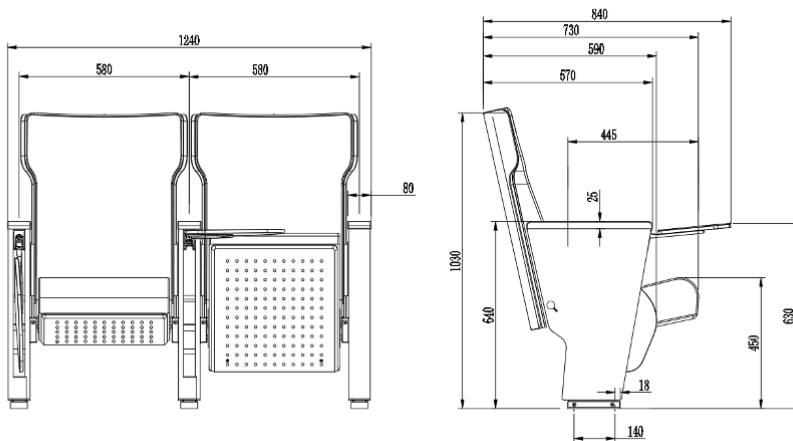
1. **Back & Seat Sponge**
  - High-density PU, cold-foam molded to prevent long-term distortion.
  - Back density: 55 kg/m<sup>3</sup>
  - Seat density: 60 kg/m<sup>3</sup>
2. **Back & Seat Cover**
  - Premium deformation-resistant high-density hard plywood.
  - Processed with high-standard treatment techniques.
3. **Fabric**
  - Premium fabric that resists stains and discoloration.
4. **Legs**
  - Constructed from 2.5 mm high-quality steel plate.
  - Mold stamped and polished for durability and aesthetics.
5. **Handrails**
  - Made from high-quality multi-layer board.
  - Polished and sprayed multiple times.
  - Assembled into an overall frame with a built-in iron frame over 3 mm thick.
  - Painted with high-quality paint and available with fabric upholstery options.
6. **Armrest Cover**
  - Made from imported timber with an external polyester coating.
7. **Tablet**
  - MDF writing board with high-quality wood veneer.
  - Polished and sealed with paint five times using Dabao paint from Taiwan.
  - Thickness: 15 mm
8. **Cushion Recovery**
  - Spring plus damping mechanism for noise-free operation.



#### 9. Screws

- Steel hexagon socket cap screws and expanding nuts for secure assembly.

**Dimensions:** (580+80=660) \* 840 \* 1030 mm



#### BRAND

### Zaneti

The latest on offer from Australian design studio, Zaneti. The brand specialised in designing chairs, tables, bases and bespoke pieces. They are specifically known for their work with aluminium outdoor furniture. Zaneti chairs and bases inject style and personality into any room. Made from an assortment of materials including quality wood, steel and aluminium they're the perfect pieces to freshen up an interior.

ZANETI

ZANETI