



## KON COMMUNAL

The iconic Kon table base is introduced in all-metal, highlighting its essential and minimal form. Made of steel, powder-coated jet black or white, the table illustrates a pure sculptural quality and serves in diverse settings.

### Options



		Supports
Low Table	470mm	Width Options 1,000mm 1,200mmLength Options
Dining Table	750mm	2400 2400 3000
Bar Table	1050mm	3000 3600

### Selection of top

MDF, Timber, Compact Laminate





Hospitality  
Furniture  
Concepts



#### ADDITIONAL INFORMATION

Leadtime

[Stock](#)

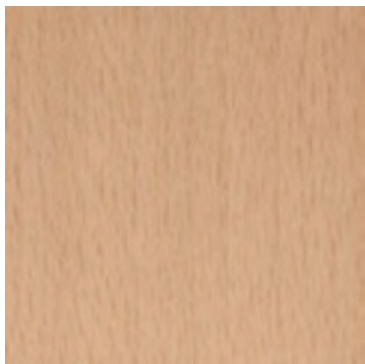
Price

[More than 500](#)

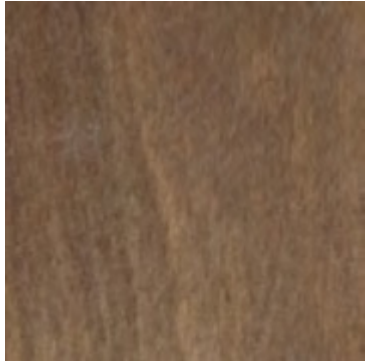
### Timber Stains



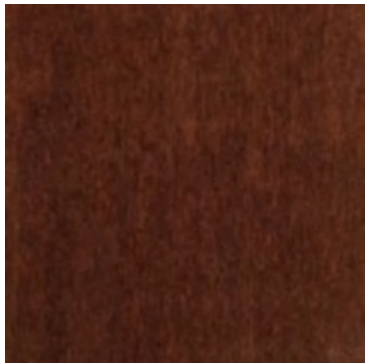
000 White Wash



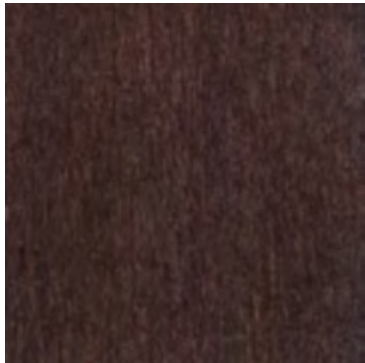
100 natural



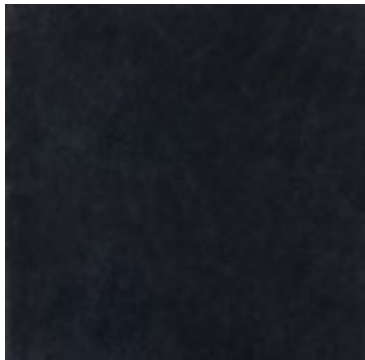
046 light walnut - rustical



014 mahogany



151 dark walnut - brown





063 black



041 grey

[Sustainability](#)



PEFC – Programme for Endorsement of Forest Certification Schemes

PEFC™/21-31-233



AFS – Australian Forestry Standard  
AFS/01-31-233



Forest Stewardship Council Certification (FSC)



FSC® C113479

## Related Blog Content



**The Ultimate Guide to Compact Laminate: Durable, Versatile, and Stylish**



When it comes to designing and furnishing spaces, whether for commercial, public, or hospitality use, [...]

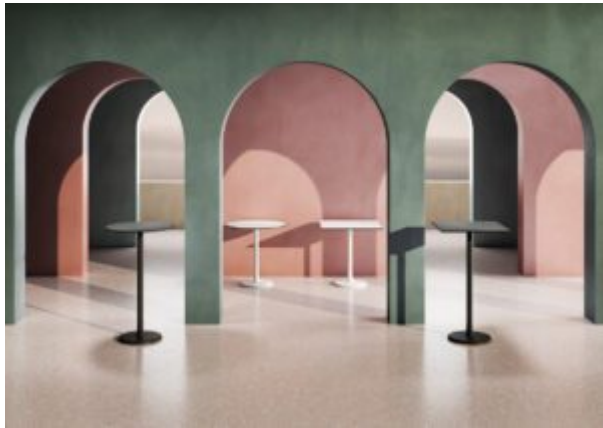
03  
Oct



### **Elevate Your Dining Experience with Sustainable Timber Table Tops**

In the world of hospitality, creating a warm and inviting dining atmosphere is essential for [...]

03  
Oct



### Elevate Your Hospitality Venue with Versatile Table Bases

In the world of hospitality, creating an inviting and aesthetically pleasing atmosphere is essential. Whether [...]

03  
Oct

### Recent Projects





Hospitality  
Furniture  
Concepts



Hospitality  
Furniture  
Concepts



## Bellboy Café

Hospitality, Brand, Zaneti

## Integration with Power





#### ODYSSEY POWER DOCK

4 GPO / 2 USB A/C  
2 GPO / 1 USB A/C  
8 GPO / 2 USB A/C

#### Colours



Black



#### BLINKY POWER POD

3 GPO / 0 USB A/C  
2 GPO / 3 USB A/C

#### Colours



Black



White





**POP-UP POWER MODULE**

2 GPO  
1 GPO

**Colours**



Black



White

## Related Blog Content



### **Boosting Customer Satisfaction: The Power of Public Spaces with Charging Solutions**

In our increasingly digital world, it's no secret that we're tethered to our electronic devices. [...]

05  
Oct

The iconic Kon table base is introduced in all-metal, highlighting its essential and minimal form. Made of steel, powder-coated jet black or white, the table illustrates a pure sculptural quality and serves in diverse settings.

### **Options**



## Supports

Low Table	470mm	Width Options 1,000mm 1,200mm
Dining Table	750mm	Length Options 2400 2400 3000
Bar Table	1050mm	3000 3600

## Selection of top

MDF, Timber, Compact Laminate

## BRAND

## HFC Design Lab

At the heart of our offerings lies the fusion of luxury and accessibility through our 'HFC Design Lab.' This specialized line showcases a curated selection of meticulously crafted furniture pieces, embodying the quintessential Italian style while being accessible to a broader audience. Driven by a passion for design excellence, each item within our HFC Design Lab collection is a testament to our commitment to quality, durability, and aesthetic finesse. Whether you seek the opulence of our high-end Italian furniture or the contemporary allure of our HFC Design Lab range, every piece is crafted with precision, reflecting unparalleled artistry and innovation. With a dedication to elevating commercial spaces worldwide, we invite you to explore our diverse catalogue, where luxury meets affordability without compromise. Experience the essence of Italian-inspired design with HFC, where every piece tells a story of timeless sophistication and impeccable craftsmanship.