



LONDONER TABLE

The legs and table top each have an impressive solid wood thickness of 60 mm which exude strength and modernity.

Dimensions

Built to specification

Materials & Finishes

Custom built to specifications. Pictured with Solid European oiled oak





ADDITIONAL INFORMATION

Stacking

[No](#)

Leadtime

[2 - 4 weeks](#)



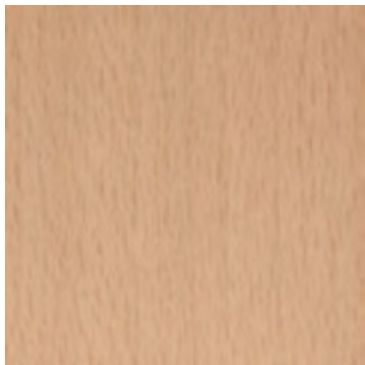




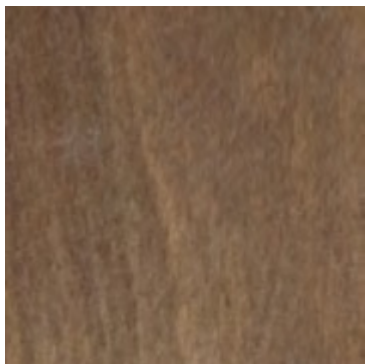
Timber Stains



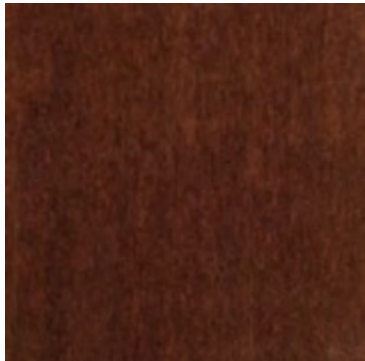
000 White Wash



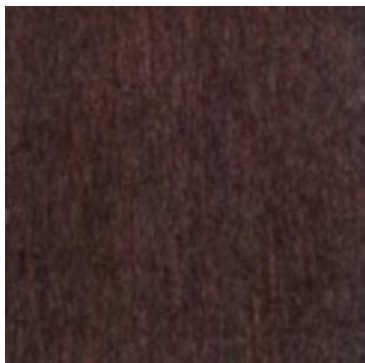
100 natural



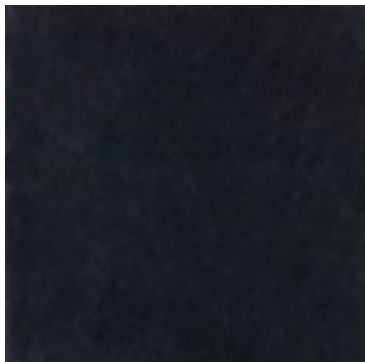
046 light walnut - rustical



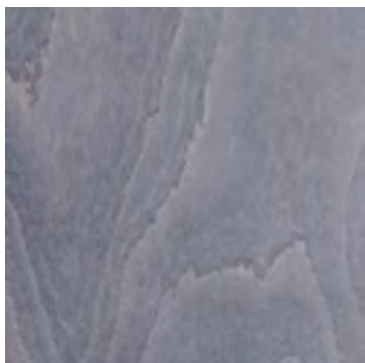
014 mahogany



151 dark walnut - brown



063 black





041 grey

[Sustainability](#)



PEFC – Programme for Endorsement of Forest Certification Schemes

PEFC™/21-31-233



AFS – Australian Forestry Standard

AFS/01-31-233



Forest Stewardship Council Certification (FSC)

FSC® C113479

Related Blog Content



[The Ultimate Guide to Compact Laminate: Durable, Versatile, and Stylish](#)

When it comes to designing and furnishing spaces, whether for commercial, public, or hospitality use, [...]

03
Oct



[Elevate Your Dining Experience with Sustainable Timber Table Tops](#)

In the world of hospitality, creating a warm and inviting dining atmosphere is essential for [...]

03
Oct



[Elevate Your Hospitality Venue with Versatile Table Bases](#)

In the world of hospitality, creating an inviting and aesthetically pleasing atmosphere is essential. Whether [...]

03
Oct

The legs and table top each have an impressive solid wood thickness of 60 mm which exude strength and modernity.

Dimensions

Built to specification

Materials & Finishes

Custom built to specifications. Pictured with Solid European oiled oak