



## OMEGA TABLE ST

### Dimensions



2000/2400/3000  
78.7/94.5/118.1"

1000 - 39.4"



2400/3000/3600  
94.5/118.1/141.7"

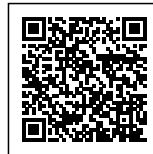
1200 - 47.2"

Built to specification - alternative sizes accepted

### Materials & Finishes

Top: American Oak, Messmate or Vic Ash

Legs: Matching timber or Steel (black or powder coated to specification)





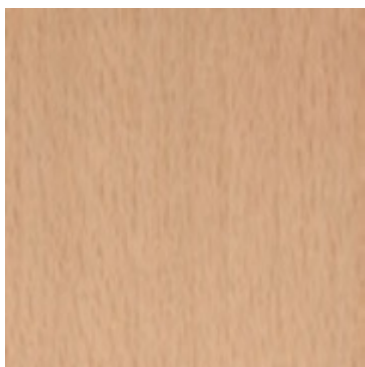
#### ADDITIONAL INFORMATION

Stacking	<a href="#">No</a>
Leadtime	<a href="#">2 – 4 weeks</a>
Price	<a href="#">More than 500</a>

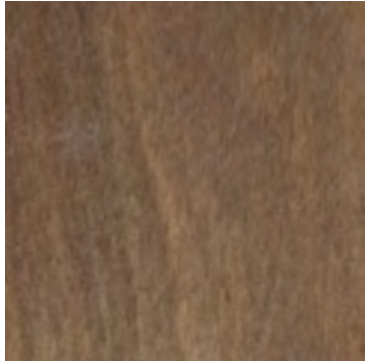
#### Timber Stains



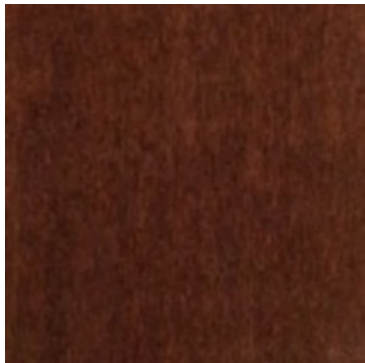
000 White Wash



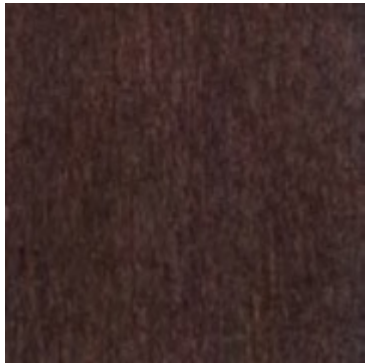
100 natural



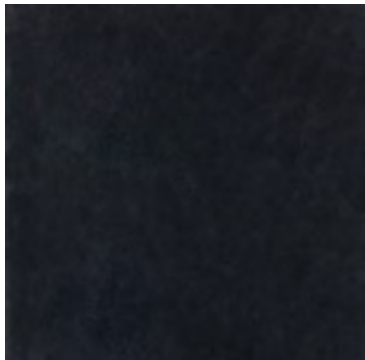
046 light walnut - rustical



014 mahogany



151 dark walnut - brown



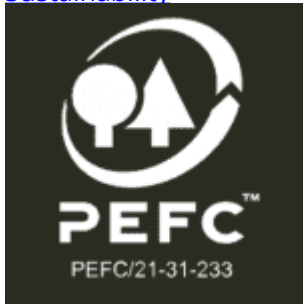


063 black



041 grey

#### Sustainability



PEFC – Programme for Endorsement of Forest Certification Schemes

PEFC™/21-31-233



AFS – Australian Forestry Standard  
AFS/01-31-233





Forest Stewardship Council Certification (FSC)  
FSC® C113479

## Related Blog Content



### [The Ultimate Guide to Compact Laminate: Durable, Versatile, and Stylish](#)

When it comes to designing and furnishing spaces, whether for commercial, public, or hospitality use, [...]

03  
Oct



### [Elevate Your Dining Experience with Sustainable Timber Table Tops](#)

In the world of hospitality, creating a warm and inviting dining atmosphere is essential for [...]

03  
Oct



### [Elevate Your Hospitality Venue with Versatile Table Bases](#)

In the world of hospitality, creating an inviting and aesthetically pleasing atmosphere is essential. Whether [...]

03  
Oct

## Integration with Power



#### ODYSSEY POWER DOCK

4 GPO / 2 USB A/C  
2 GPO / 1 USB A/C  
8 GPO / 2 USB A/C

#### Colours





Black



#### **BLINKY POWER POD**

3 GPO / 0 USB A/C  
2 GPO / 3 USB A/C

#### **Colours**



Black



White



**POP-UP POWER MODULE**

2 GPO  
1 GPO

**Colours**



Black



White

## Related Blog Content





### Passenger Terminal Expo – Elevating Passenger Experiences: HFC's Partners Shine

In the bustling world of airport terminals, every detail counts in shaping travellers' experiences. At [...]

08  
May

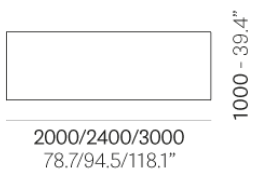


### Boosting Customer Satisfaction: The Power of Public Spaces with Charging Solutions

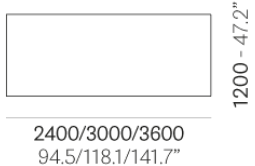
In our increasingly digital world, it's no secret that we're tethered to our electronic devices. [...]

05  
Oct

#### Dimensions



1000 - 39.4"



1200 - 47.2"

Built to specification - alternative sizes accepted





### **Materials & Finishes**

Top: American Oak, Messmate or Vic Ash

Legs: Matching timber or Steel (black or powder coated to specification)