

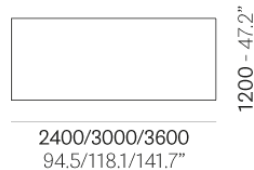
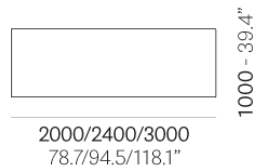


OMEGA TABLE

The Omega Table plays homage to the naturalness of materials and the beauty of imperfection.

The legs and table top each have an impressive solid wood thickness of 60 mm which exude strength and modernity.

Dimensions



Built to specification - alternative sizes accepted

Materials & Finishes

Top: American Oak, Messmate or Vic Ash

Legs: Matching timber or Steel (black or powder coated to specification)





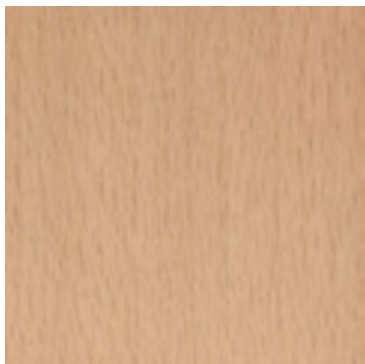
ADDITIONAL INFORMATION

Stacking	No
Leadtime	2 – 4 weeks

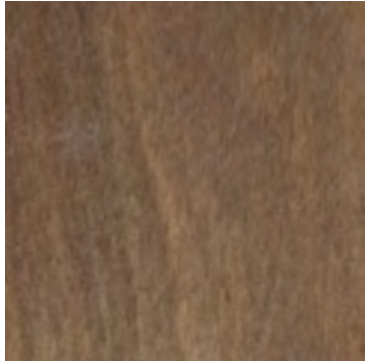
Timber Stains



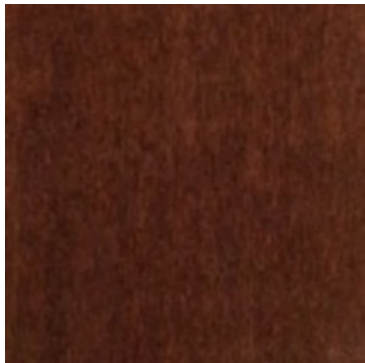
000 White Wash



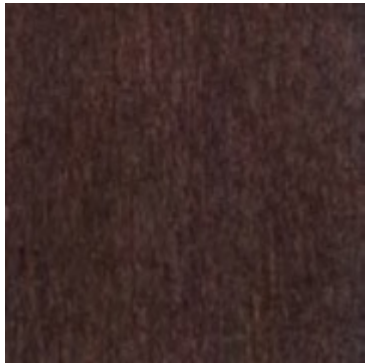
100 natural



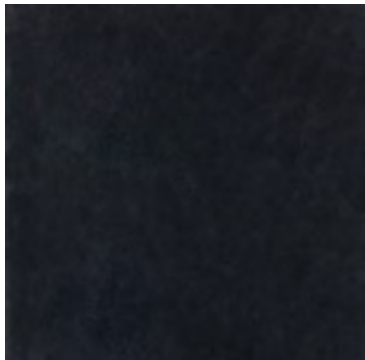
046 light walnut - rustical



014 mahogany



151 dark walnut - brown



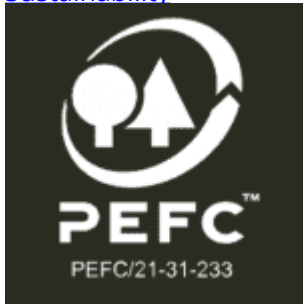


063 black



041 grey

Sustainability



PEFC – Programme for Endorsement of Forest Certification Schemes

PEFC™/21-31-233



AFS – Australian Forestry Standard
AFS/01-31-233





Forest Stewardship Council Certification (FSC)
FSC® C113479

Related Blog Content



[The Ultimate Guide to Compact Laminate: Durable, Versatile, and Stylish](#)

When it comes to designing and furnishing spaces, whether for commercial, public, or hospitality use, [...]

03
Oct



[Elevate Your Dining Experience with Sustainable Timber Table Tops](#)

In the world of hospitality, creating a warm and inviting dining atmosphere is essential for [...]

03
Oct



[Elevate Your Hospitality Venue with Versatile Table Bases](#)

In the world of hospitality, creating an inviting and aesthetically pleasing atmosphere is essential. Whether [...]

03
Oct

Integration with Power



ODYSSEY POWER DOCK

4 GPO / 2 USB A/C
2 GPO / 1 USB A/C
8 GPO / 2 USB A/C

Colours



Black



BLINKY POWER POD

3 GPO / 0 USB A/C
2 GPO / 3 USB A/C

Colours



Black



White



POP-UP POWER MODULE

2 GPO
1 GPO

Colours



Black



White

Related Blog Content



Passenger Terminal Expo – Elevating Passenger Experiences: HFC's Partners Shine

In the bustling world of airport terminals, every detail counts in shaping travellers' experiences. At [...]

08
May



Boosting Customer Satisfaction: The Power of Public Spaces with Charging Solutions

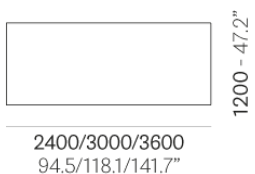
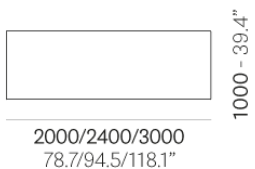
In our increasingly digital world, it's no secret that we're tethered to our electronic devices. [...]

05
Oct

The Omega Table plays homage to the naturalness of materials and the beauty of imperfection.

The legs and table top each have an impressive solid wood thickness of 60 mm which exude strength and modernity.

Dimensions





Built to specification - alternative sizes accepted

Materials & Finishes

Top: American Oak, Messmate or Vic Ash

Legs: Matching timber or Steel (black or powder coated to specification)

BRAND

HFC Design Lab

At the heart of our offerings lies the fusion of luxury and accessibility through our 'HFC Design Lab.' This specialized line showcases a curated selection of meticulously crafted furniture pieces, embodying the quintessential Italian style while being accessible to a broader audience. Driven by a passion for design excellence, each item within our HFC Design Lab collection is a testament to our commitment to quality, durability, and aesthetic finesse. Whether you seek the opulence of our high-end Italian furniture or the contemporary allure of our HFC Design Lab range, every piece is crafted with precision, reflecting unparalleled artistry and innovation. With a dedication to elevating commercial spaces worldwide, we invite you to explore our diverse catalogue, where luxury meets affordability without compromise. Experience the essence of Italian-inspired design with HFC, where every piece tells a story of timeless sophistication and impeccable craftsmanship