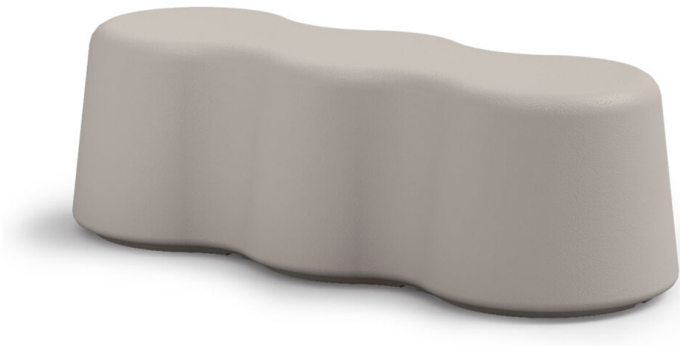




Peanuts Bench 3



Multicolored or brightly colored benches with a wavy shape are designed to add liveliness to the spaces around them. Their sinuous, sometimes playful, shape not only adds a touch of dynamism, but also offers comfort and practicality, making them ideal for informal gatherings or shared relaxation.

Dimensions

45 cm



144 cm



55 cm



SPECIFICATIONS

Arms	No
Leadtime	14 weeks +
Linking	No
Material	Plastic
Stacking	No
Price	More than 500