



#### RUSTIC WASHED TIMBER TOP

Our timber table tops are expertly manufactured in-house to your specifications.

We offer customisation of sizing, edge profiles and staining.

A great addition to any space where rough, raw textures and characteristics are welcomed. Available pressed on ply or built on an MDF substrate, these tops can be coloured as needed to create personal touches.

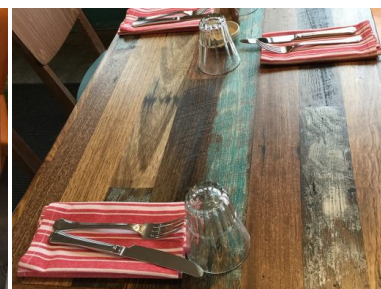
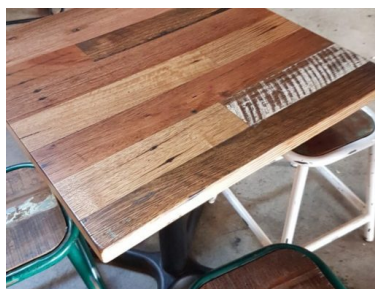
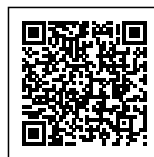
#### Colours

- Variable, as required

#### Grain detail

- Highly variable - pinholes, gum veining and coarse grain textures
- Detailing from sawmill occasionally present (also known as skip-dressing)

Hospitality Furniture Concepts proudly uses sustainably and responsibly sourced timber species in our manufacturing.





Hospitality  
Furniture  
Concepts



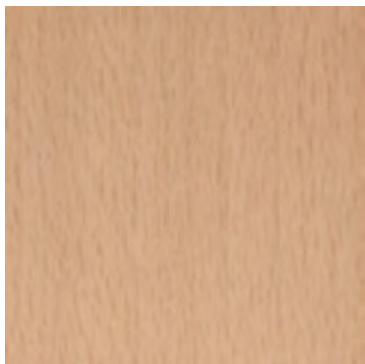
#### ADDITIONAL INFORMATION

**Leadtime** [2 - 4 weeks](#)  
**Material** [Timber](#)

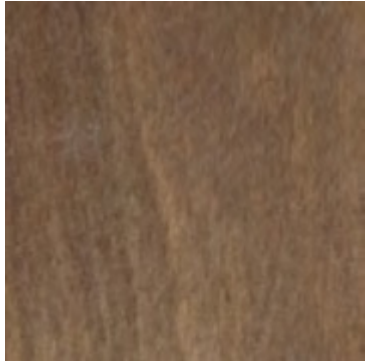
#### Timber Stains



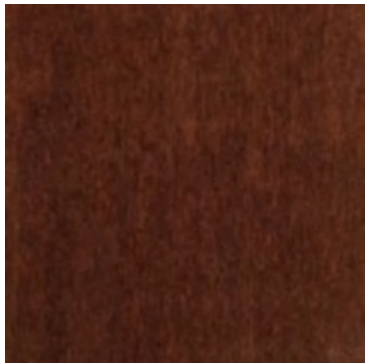
000 White Wash



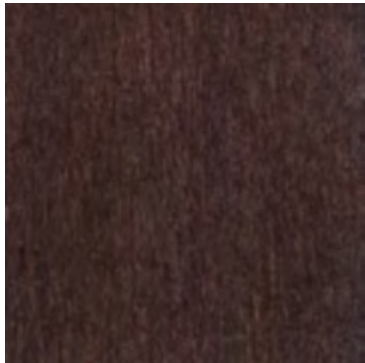
100 natural



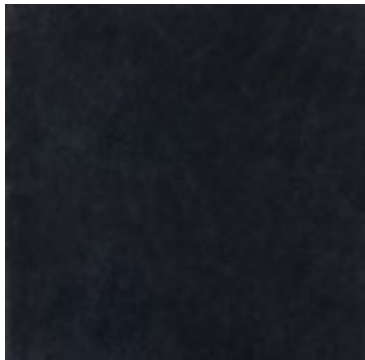
046 light walnut - rustical



014 mahogany



151 dark walnut - brown



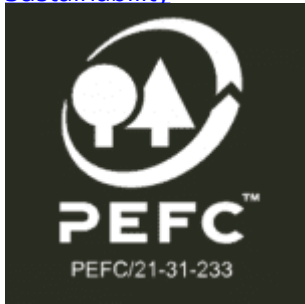


063 black



041 grey

#### Sustainability



PEFC – Programme for Endorsement of Forest Certification Schemes

PEFC™/21-31-233



AFS – Australian Forestry Standard  
AFS/01-31-233





Forest Stewardship Council Certification (FSC)  
FSC® C113479

## **Recent Projects - using Timber Table Tops**



Hospitality  
Furniture  
Concepts



**Brewdog, South Eveleigh**

Hospitality, Brand, Zaneti







Hospitality  
Furniture  
Concepts



**MISC Parramatta (NSW)**

Hospitality, Brand, Zaneti





Hospitality  
Furniture  
Concepts



## The Tote – Moonee Valley Racing Club

Hospitality, Brand, Zaneti

## Related Blog Content





### [The Ultimate Guide to Compact Laminate: Durable, Versatile, and Stylish](#)

When it comes to designing and furnishing spaces, whether for commercial, public, or hospitality use, [...]

03  
Oct



### [Elevate Your Dining Experience with Sustainable Timber Table Tops](#)

In the world of hospitality, creating a warm and inviting dining atmosphere is essential for [...]

03  
Oct



### [Elevate Your Hospitality Venue with Versatile Table Bases](#)

In the world of hospitality, creating an inviting and aesthetically pleasing atmosphere is essential. Whether [...]

03  
Oct

## Base Pairing Ideas



[Quick View](#)

Tables



[Pirelli Table Base – Small](#)



[Quick View](#)

Table Bases

[Colorado Table Base \(Brushed Brass Variants\)](#)





[Quick View](#)

Designer Table Bases

[Arki](#)

[Pedrali](#)



[Quick View](#)

Gaber

[Roller Table](#)

[Gaber](#)



[Quick View](#)

Drybars

[Bistro Dry Bar](#)



[Quick View](#)

Designer Table Bases

[Concrete 1100](#)

[Pedrali](#)



[Quick View](#)

Designer Table Bases

[Kon](#)

Our timber table tops are expertly manufactured in-house to your specifications.

We offer customisation of sizing, edge profiles and staining.

A great addition to any space where rough, raw textures and characteristics are welcomed.

Available pressed on ply or built on an MDF substrate, these tops can be coloured as needed to create personal touches.

### Colours

- Variable, as required

### Grain detail

- Highly variable - pinholes, gum veining and coarse grain textures
- Detailing from sawmill occasionally present (also known as skip-dressing)

Hospitality Furniture Concepts proudly uses sustainably and responsibly sourced timber species in our manufacturing.



Hospitality  
Furniture  
Concepts