



WORMY CHESTNUT - SOLID TIMBER TOP

Our timber table tops are expertly manufactured in-house to your specifications.

We offer customisation of sizing, edge profiles and staining.

Highly variable timber, Australian Wormy Chestnut has a unique appearance - the result of the hardness of Australian trees enduring wildfires, seasons of drought, flooding and insects. These features produce a similar appearance to recycled messmate. Known as Australian Chestnut when handpicked to be free of features.

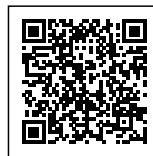
Colours

- Overall, has mellow blonde colours blended with straw and light to dark browns

Grain detail

- Red and black gum veining pockets, markings of wildfires
- Pinholes and squiggly black features resulting from ambrosia beetles
- Non-uniform grain patterns and sap lines

Hospitality Furniture Concepts proudly uses sustainably and responsibly sourced timber species in our manufacturing.







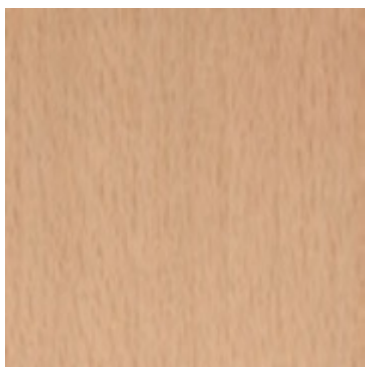
ADDITIONAL INFORMATION

Leadtime	2 - 4 weeks
Material	Timber
Origin	Made in Australia

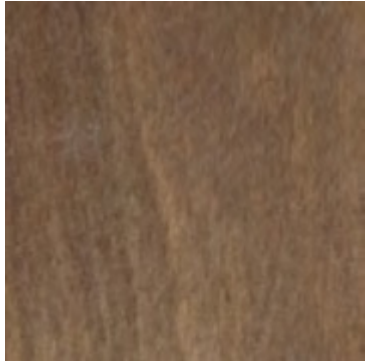
Timber Stains



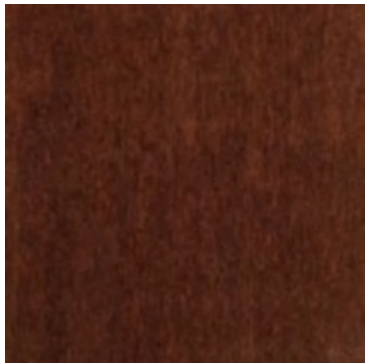
000 White Wash



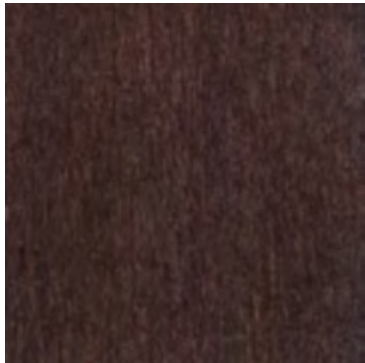
100 natural



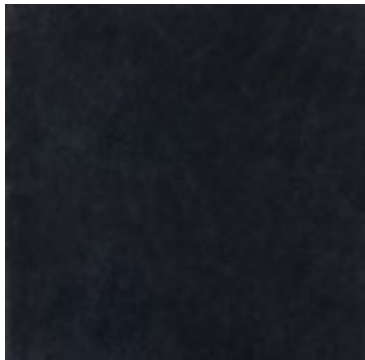
046 light walnut - rustical



014 mahogany



151 dark walnut - brown



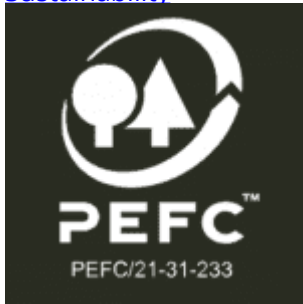


063 black



041 grey

Sustainability



PEFC – Programme for Endorsement of Forest Certification Schemes

PEFC™/21-31-233



AFS – Australian Forestry Standard
AFS/01-31-233





Forest Stewardship Council Certification (FSC)
FSC® C113479

Recent Projects - using Timber Table Tops



Hospitality
Furniture
Concepts



Brewdog, South Eveleigh

Hospitality, Brand, Zaneti





Hospitality
Furniture
Concepts



MISC Parramatta (NSW)

Hospitality, Brand, Zaneti





Hospitality
Furniture
Concepts



The Tote – Moonee Valley Racing Club

Hospitality, Brand, Zaneti





Hospitality
Furniture
Concepts



Warragul Country Club

Hospitality

Related Blog Content





[The Ultimate Guide to Compact Laminate: Durable, Versatile, and Stylish](#)

When it comes to designing and furnishing spaces, whether for commercial, public, or hospitality use, [...]

03
Oct



[Elevate Your Dining Experience with Sustainable Timber Table Tops](#)

In the world of hospitality, creating a warm and inviting dining atmosphere is essential for [...]

03
Oct



[Elevate Your Hospitality Venue with Versatile Table Bases](#)

In the world of hospitality, creating an inviting and aesthetically pleasing atmosphere is essential. Whether [...]

03
Oct

Base Pairing Ideas



[Quick View](#)

Tables



[Pirelli Table Base – Small](#)



[Quick View](#)

Table Bases

[Colorado Table Base \(Brushed Brass Variants\)](#)



[Quick View](#)

Designer Table Bases

[Arki](#)

[Pedrali](#)



[Quick View](#)

Gaber

[Roller Table](#)

[Gaber](#)



[Quick View](#)

Drybars

[Bistro Dry Bar](#)



[Quick View](#)

Designer Table Bases

[Concrete 1100](#)

[Pedrali](#)



[Quick View](#)

Designer Table Bases

[Kon](#)

Our timber table tops are expertly manufactured in-house to your specifications.

We offer customisation of sizing, edge profiles and staining.

Highly variable timber, Australian Wormy Chestnut has a unique appearance - the result of the hardness of Australian trees enduring wildfires, seasons of drought, flooding and insects. These features produce a similar appearance to recycled messmate. Known as Australian Chestnut when handpicked to be free of features.

Colours

- Overall, has mellow blonde colours blended with straw and light to dark browns

Grain detail

- Red and black gum veining pockets, markings of wildfires
- Pinholes and squiggly black features resulting from ambrosia beetles
- Non-uniform grain patterns and sap lines

Hospitality Furniture Concepts proudly uses sustainably and responsibly sourced timber species in our manufacturing.



Hospitality
Furniture
Concepts