



**Legend**

Legenda. Légende. Legende. Leyenda

**Wood.** Legno. Bois. Holz. Madera

<b>FS</b>	Bleached beech	Faggio sbiancato	Hêtre blanchi	Buche gebleicht	Haya aclarada
<b>FR</b>	Bleached ash	Frassino sbiancato	Frêne blanchi	Esche gebleicht	Fresno aclarado
<b>RS</b>	Bleached oak	Rovere sbiancato	Chêne blanchi	Eiche gebleicht	Roble aclarado
<b>W</b>	Oak/beech stained wenge	Rovere/faggio tinto wengé	Chêne /Hêtre teinté wengé	Eiche/Buche Wengé	Roble/Haya teñido wengué
<b>N1</b>	Oak/ash/beech stained clear walnut	Rovere/frassino/faggio tinto noce chiaro	Chêne/Frêne /Hêtre teinté noyer	Eiche/Esche/Buche Nuss gebeizt	Roble/Fresno/Haya teñido nogal
<b>TC</b>	Oak/ash stained on sample	Rovere/frassino tinto campione	Chêne/Frêne teinté échantillon	Eiche/Esche nach Muster gebeizt	Roble/Fresno teñido según muestra
<b>EB</b>	Ebony	Ebano	Ebène	Ebenholz	Ébano
<b>ZB</b>	Zebrano	Zebrano	Zebrano	Zebrano	zebrano
<b>MP</b>	Maple	Acero	Herable	Ahorn	Arce
<b>N</b>	Walnut	Noce	Noyer	Nuss	Nogal
<b>AN</b>	Black lacquered oak/ash visible grains, beech stained black	Rovere/frassino laccato nero a poro aperto, faggio tinto nero	Chêne/Frêne laqué noir à pore ouvert, hêtre teinté noir	Eiche/Esche schwarz offenporig lackiert, Buche schwarz lackiert	Roble/fresno lacado en negro a poro abierto, haya teñida de negro
<b>BI</b>	White lacquered oak/ash with visible grains	Rovere/frassino laccato bianco a poro aperto	Chêne/Frêne laqué blanc à pore ouvert	Eiche/Esche weiß offenporig lackiert	Roble/fresno lacado en blanco a poro abierto
<b>RA</b>	Pink lacquered oak/ash with visible grains	Rovere/frassino laccato rosa a poro aperto	Chêne/Frêne laqué rose à pore ouvert	Eiche/Esche rosa offenporig lackiert	Roble/fresno lacado en rosa a poro abierto
<b>GC</b>	Light grey lacquered oak/ash with visible grains	Rovere/frassino laccato grigio chiaro a poro aperto	Chêne/Frêne laqué gris clair à pore ouvert	Eiche/Esche hellgrau offenporig lackiert	Roble/fresno lacado en gris claro a poro abierto
<b>AR</b>	Orange stained ash	Frassino tinto arancio	Frêne teinté orange	Esche orange lackiert	Fresno teñido de naranja
<b>BL2</b>	Dark Blue lacquered oak/ash with visible grains	Rovere/frassino laccato blu scuro a poro aperto	Chêne/Frêne laqué bleu foncé à pore ouvert	Eiche/Esche dunkelblau offenporig lackiert	Roble/fresno lacado en azul oscuro a poro abierto
<b>AZ1</b>	Light blue lacquered oak/ash with visible grains	Rovere/frassino laccato azzurro a poro aperto	Chêne/Frêne laqué bleu clair à pore ouvert	Eiche/Esche hellblau offenporig lackiert	Roble/fresno lacado en azul a poro abierto
<b>VE1</b>	Light green lacquered oak/ash with visible grains	Rovere/frassino laccata verde chiaro a poro aperto	Chêne/Frêne laqué vert clair à pore ouvert	Eiche/Esche hellgrün offenporig lackiert	Roble/fresno lacado en verde claro a poro abierto
<b>VE2</b>	Dark green lacquered oak/ash with visible grains	Rovere/frassino laccato verde scuro a poro aperto	Chêne/Frêne laqué vert foncé à pore ouvert	Eiche/Esche dunkelgrün offenporig lackiert	Roble/fresno lacado en verde oscuro a poro abierto
<b>RB</b>	Ruby red lacquered oak/ash with visible grains	Rovere/frassino laccato rosso rubino a poro aperto	Chêne/Frêne laqué rouge rubis à pore ouvert	Eiche/Esche rubinrot offenporig lackiert	Roble/fresno lacado en rojo rubí a poro abierto
<b>MO</b>	Mahogany lacquered oak/ash with visible grains	Rovere/frassino laccato mogano a poro aperto	Chêne/Frêne laqué acajou à pore ouvert	Eiche/Esche mahagoni offenporig lackiert	Roble/fresno lacado en caoba a poro abierto
<b>MC</b>	Cognac lacquered oak/ash with visible grains	Rovere/frassino laccato cognac a poro aperto	Chêne/Frêne laqué cognac à pore ouvert	Eiche/Esche cognac offenporig lackiert	Roble/fresno lacado en coñac a poro abierto
<b>V101</b>	Gris vintage	Finitura grigio anticato	Finition gris vieilli	Farbe Vintage Grau	Acabado gris efecto vintage
<b>V102</b>	Wenge vintage	Finitura wengé anticato	Finition wengé vieilli	Farbe Vintage Wenge	Acabado wengué efecto vintage
<b>V103</b>	Walnut vintage	Finitura noce anticato	Finition noyer vieilli	Farbe Vintage Nussbaum	Acabado nogal efecto vintage

**Plastic material.** Materiale plastico. Matériau plastique. Kunststoff. Materiales plásticos

<b>NY</b>	Nylon	Nylon	Nylon	Nylon	Nylon
<b>PET</b>	Polyethylene	Polietilene	Poléthylène	Polyethylen	Polietileno
<b>PPL</b>	Polypropylene	Polipropilene	Polypropylène	Polypropylen	Polipropileno
<b>PC</b>	Polycarbonate	Policarbonato	Polycarbonate	Polykarbonat	Policarbonato
<b>SCR</b>	Chromed ABS	ABS cromato	ABS Chromé	ABS Verchromt	ABS cromado
<b>TP</b>	Technopolymer	Tecnopolimero	Technopolymère	Technopolymer	Tecnopolímero
<b>ME</b>	Methacrylate	Metacrilato	Méthacrylate	Methacrylat	Metacrilato

**Fabric.** Tessuto.Tissu. Stoff. Tela

<b>A</b>	Padded with Cat. A	Imbottitura con Cat. A	Assise garnie Cat. A	Gepolstert mit Kat. A	Tapizado en Cat. A
<b>B</b>	Padded with Cat. B	Imbottitura con Cat. B	Assise garnie Cat. B	Gepolstert mit Kat. B	Tapizado en Cat. B
<b>C</b>	Padded with Cat. C	Imbottitura con Cat. C	Assise garnie Cat. C	Gepolstert mit Kat. C	Tapizado en Cat. C
<b>D</b>	Padded with Cat. D	Imbottitura con Cat. D	Assise garnie Cat. D	Gepolstert mit Kat. D	Tapizado en Cat. D
<b>E</b>	Padded with Cat. E	Imbottitura con Cat. E	Assise garnie Cat. E	Gepolstert mit Kat. E	Tapizado en Cat. E
<b>F</b>	Padded with genuine or regenerated leather	Rivestimento in cuoio naturale o rigenerato	Rèvetement en cuir naturel ou régénéré	Bezug aus natürlichem oder regeneriertem Leder	Fornado en cuero natural o regenerado
<b>G</b>	Padded with Cat. G	Imbottitura con Cat. G	Assise garnie Cat. G	Gepolstert mit Kat. G	Tapizado en Cat. G
<b>H</b>	Padded with Cat. H	Imbottitura con Cat. H	Assise garnie Cat. H	Gepolstert mit Kat. H	Tapizado en Cat. H
<b>N</b>	Padded with Cat. N	Imbottitura con Cat. N	Assise garnie Cat. N	Gepolstert mit Kat. N	Tapizado en Cat. N
<b>P</b>	Padded with Cat. P	Imbottitura con Cat. P	Assise garnie Cat. P	Gepolstert mit Kat. P	Tapizado en Cat. P
<b>PG</b>	Wooden panel and foam	Pannello e gomma piuma			Panel y gomaespuma
<b>TXT</b>	Textilene	Textilene			textileno

**Steel and stainless steel.** Acciaio e acciaio inox. Acier et inox. Stahl und Edelstahl. Acero y inox

<b>AC</b>	Brushed steel	Acciaio inox satinato	Inox brossé	Edelstahl matt	Acero inoxidable satinado
<b>LU</b>	Polished steel	Acciaio inox lucidato	Inox poli	Edelstahl poliert	Acero inoxidable pulido
<b>CR</b>	Chromed	Acciaio cromato	Chromée	Verchromter Rohr	Cromado
<b>ST</b>	Satinized	Acciaio satinato	Satinée	Satinierter Rohr	Satinado
<b>EC</b>	Corten	Effetto Corten	Effet corten	Corten-Effekt	efecto Cortén
<b>OA</b>	Antique brass	Ottone anticato	Laiton vieilli	Antikes Messing	Latón envejecido
<b>RM</b>	Antique copper	Rame anticato	Cuivre vieilli	Antikes Kupfer	Cobre envejecido
<b>BS</b>	Antique bronze	Bronzo anticato	Bronze vieilli	Antike Bronze	Bronce envejecido
<b>TN</b>	Titanium	Effetto titanio	Titanium	Titan	Titanio

**Alluminium.** Alluminio. Aluminium. Aluminium, Aluminio

<b>AS</b>	Brushed aluminium	Alluminio spazzolato	Aluminium brossé	Aluminium satiniert	Aluminio satinado
<b>AA</b>	Anodized aluminium	Alluminio anodizzato	Aluminium anodisé	Aluminium anodisiert	Aluminio anodizado

## Finishes / Finiture

### Steel and stainless steel / Acciaio e acciaio inox

---



**CR**

Chromed steel  
Acciaio cromato



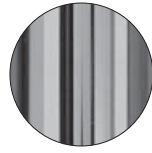
**ST**

Satinized steel  
Acciaio satinato



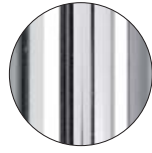
**CO**

Matt chromed steel  
Acciaio cromato opaco



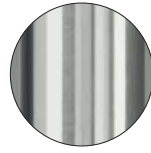
**CN**

Black chromed steel  
Acciaio cromato nero



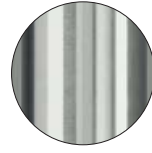
**LU**

Polished s/steel  
Acciaio inox lucidato



**AC**

Brushed s/steel  
Acciaio inox satinato



**AC 316**

Brushed s/steel AISI 316  
for outdoor  
Acciaio inox AISI 316 per  
esterno



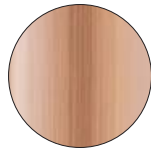
**BS**

Antique bronzer steel  
Acciaio bronzo anticato



**OA**

Antique brass steel  
Acciaio ottone anticato



**RM**

Antique copper steel  
Acciaio rame anticato



**TN**

Titanium steel  
Acciaio finitura titanio

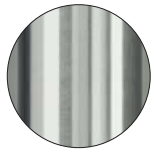
### Aluminium / Alluminio

---



**LU**

Polished aluminium  
Alluminio lucidato



**AS**

Satinized aluminium  
Alluminio satinato



**AA**

Anodized aluminium  
Alluminio anodizzato



**TN**

Titanium  
Titanio

### Nichel / Nichel

---



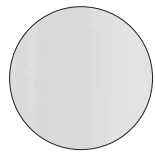
**AS**

Satinized nichel  
Nichel satinato

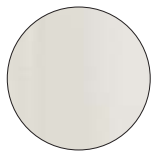
Colours are indicative. Pedrali reserves the right to modify or upgrade the product without prior notice.  
I colori sono indicativi. Pedrali si riserva la facoltà di apportare modifiche o migliorie senza alcun preavviso.

# Indoor finishes / Finiture per interno

Powder coated cast-iron, steel and aluminium / Ghisa, acciaio e alluminio verniciato



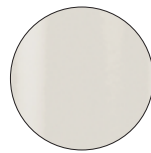
**BI100**  
White,  
textured-matt finish  
Bianco,  
finitura goffrata-opaca



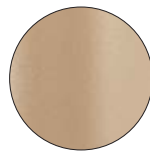
**BI200**  
White,  
textured-matt finish  
Bianco,  
finitura goffrata-opaca



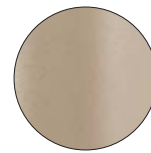
**BI300**  
White,  
smooth-matt finish  
Bianco,  
finitura liscia-opaca



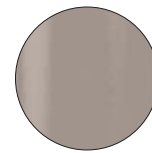
**BI400**  
White,  
smooth-glossy finish  
Bianco,  
finitura liscia-lucida



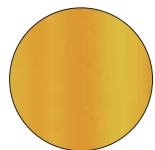
**SA100**  
Sand,  
textured-matt finish  
Sabbia,  
finitura goffrata-opaca



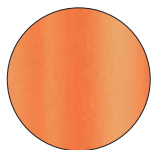
**SA200**  
Sand,  
textured-matt finish  
Sabbia,  
finitura goffrata-opaca



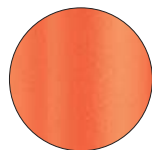
**SA300**  
Sand,  
hammered-glossy finish  
Sabbia,  
finitura bucciata-lucida



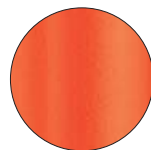
**GI100**  
Yellow,  
textured-matt finish  
Giallo,  
finitura goffrata-opaca



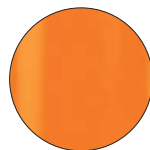
**AR200**  
Orange,  
textured-matt finish  
Arancio,  
finitura goffrata-opaca



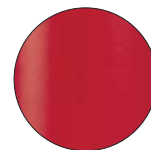
**AR500**  
Orange,  
textured-matt finish  
Arancio,  
finitura goffrata-opaca



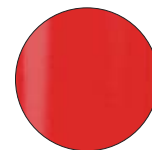
**AR400**  
Orange,  
textured-matt finish  
Arancio,  
finitura goffrata-opaca



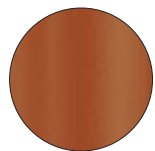
**AR300**  
Orange,  
smooth-glossy finish  
Arancio,  
finitura liscia-lucida



**RO200**  
Red,  
textured-matt finish  
Rosso,  
finitura goffrata-opaca



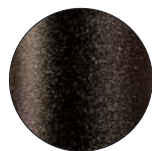
**RO100**  
Red,  
smooth-glossy finish  
Rosso,  
finitura liscia-lucida



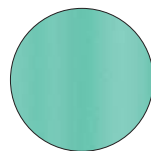
**TE**  
Terracotta,  
textured-matt finish  
Terracotta,  
finitura goffrata-opaca



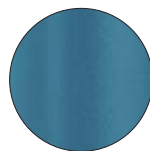
**RU**  
Rust,  
textured-matt finish  
Ruggine,  
finitura goffrata-opaca



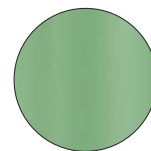
**MG**  
Brown,  
textured-matt finish  
Marrone,  
finitura goffrata-opaca



**AZ100**  
Light blue,  
textured-matt finish  
Azzurro,  
finitura goffrata-opaca



**BL300**  
Blue,  
textured-matt finish  
Blu,  
finitura goffrata-opaca



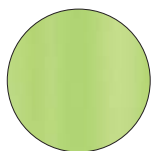
**VE100**  
Sage green,  
textured-matt finish  
Verde salvia,  
finitura goffrata-opaca



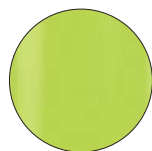
**VE300**  
Forest green,  
textured-matt finish  
Verde bosco,  
finitura goffrata-opaca



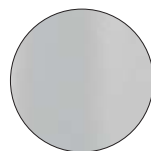
**6005**  
Green,  
smooth-glossy finish  
Verde,  
finitura liscia-lucida



**VE400**  
Green,  
textured-matt finish  
Verde,  
finitura goffrata-opaca



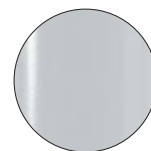
**VE200**  
Green,  
smooth-glossy finish  
Verde,  
finitura liscia-lucida



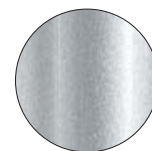
**BE100**  
Beige,  
textured-matt finish  
Beige,  
finitura goffrata-opaca



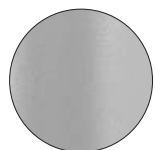
**BE200**  
Beige,  
textured-matt finish  
Beige,  
finitura goffrata-opaca



**AL**  
Aluminium,  
smooth-glossy finish  
Alluminio,  
finitura liscia-lucida



**9007**  
Aluminium,  
smooth-matt finish  
Alluminio,  
finitura liscia-opaca



**AG**  
Aluminium,  
textured-matt finish  
Alluminio,  
finitura goffrata-opaca



**GA**  
Anthracite grey,  
textured-matt finish  
Grigio antracite,  
finitura goffrata-opaca



**GN**  
Natural grey,  
textured-matt finish  
Grigio naturale,  
finitura goffrata-opaca



**\_NERO**  
Black,  
hammered-matt finish  
Nero,  
finitura bucciata-opaca



**NEF**  
Black soft-touch,  
smooth-matt finish  
Nero soft-touch,  
finitura liscia-opaca



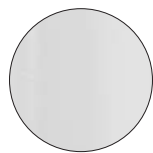
**TR**  
Transparent powder coated,  
smooth-matt finish  
Verniciatura trasparente,  
finitura liscia-opaca

Colours are indicative. Pedrali reserves the right to modify or upgrade the product without prior notice.  
I colori sono indicativi. Pedrali si riserva la facoltà di apportare modifiche o migliorie senza alcun preavviso.

# Outdoor finishes / Finiture per esterno

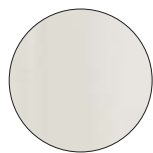


Powder coated cast-iron, steel and aluminium / Ghisa, acciaio e alluminio verniciato



**BI100E**

White,  
textured-matt finish  
Bianco,  
finitura goffrata-opaca



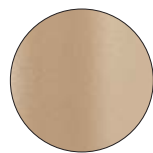
**BI200E**

White,  
textured-matt finish  
Bianco,  
finitura goffrata-opaca



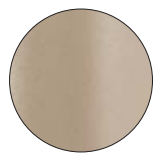
**BI300E**

White,  
smooth-matt finish  
Bianco,  
finitura liscia-opaca



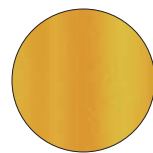
**SA100E**

Sand,  
textured-matt finish  
Sabbia,  
finitura goffrata-opaca



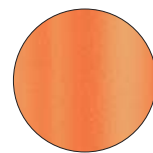
**SA200E**

Sand,  
textured-matt finish  
Sabbia,  
finitura goffrata-opaca



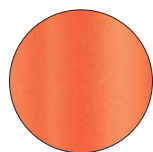
**GI100E**

Yellow,  
textured-matt finish  
Giallo,  
finitura goffrata-opaca



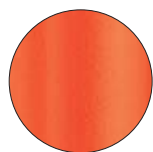
**AR200E**

Orange,  
textured-matt finish  
Arancio,  
finitura goffrata-opaca



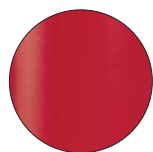
**AR500E**

Orange,  
textured-matt finish  
Arancio,  
finitura goffrata-opaca



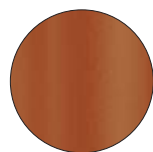
**AR400E**

Orange,  
textured-matt finish  
Arancio,  
finitura goffrata-opaca



**RO200E**

Red,  
textured-matt finish  
Rosso,  
finitura goffrata-opaca



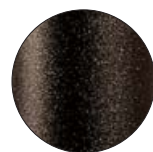
**TEE**

Terracotta,  
textured-matt finish  
Terracotta,  
finitura goffrata-opaca



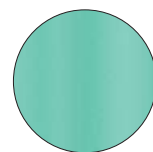
**RUE**

Rust,  
textured-matt finish  
Ruggine,  
finitura goffrata-opaca



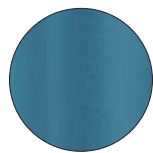
**MGE**

Brown,  
textured-matt finish  
Marrone,  
finitura goffrata-opaca



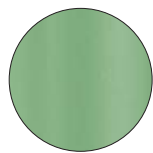
**AZ100E**

Light blue,  
textured-matt finish  
Azzurro,  
finitura goffrata-opaca



**BL300E**

Blue,  
textured-matt finish  
Blu,  
finitura goffrata-opaca



**VE100E**

Sage green,  
textured-matt finish  
Verde salvia,  
finitura goffrata-opaca



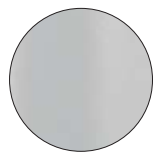
**VE300E**

Forest green,  
textured-matt finish  
Verde bosco,  
finitura goffrata-opaca



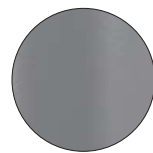
**6005E**

Green,  
smooth-glossy finish  
Verde,  
finitura liscia-lucida



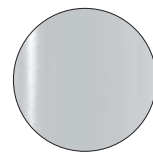
**BE100E**

Beige,  
textured-matt finish  
Beige,  
finitura goffrata-opaca



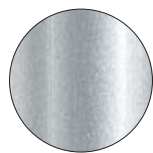
**BE200E**

Beige,  
textured-matt finish  
Beige,  
finitura goffrata-opaca



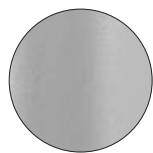
**ALE**

Aluminium,  
smooth-glossy finish  
Alluminio,  
finitura liscia-lucida



**9007E**

Aluminium,  
smooth-matt finish  
Alluminio,  
finitura liscia-opaca



**AGE**

Aluminium,  
textured-matt finish  
Alluminio,  
finitura goffrata-opaca



**GAE**

Anthracite grey,  
textured-matt finish  
Grigio antracite,  
finitura goffrata-opaca



**GNE**

Natural grey,  
textured-matt finish  
Grigio naturale,  
finitura goffrata-opaca



**NPE**

Black,  
textured-matt finish  
Nero,  
finitura goffrata-opaca

Colours are indicative. Pedrali reserves the right to modify or upgrade the product without prior notice.  
I colori sono indicativi. Pedrali si riserva la facoltà di apportare modifiche o migliorie senza alcun preavviso.

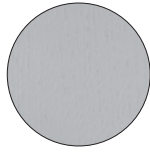
# Finishes / Finiture

Lacquered wood with visible grains / Legno laccato a poro aperto

---



**BI**  
White  
Bianco



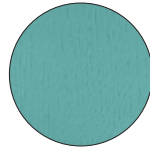
**GC**  
Light grey  
Grigio chiaro  
PANTONE 400 U



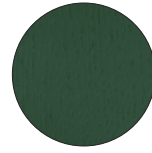
**AN**  
Black  
Nero  
PANTONE Black U



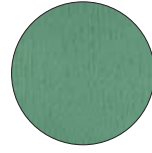
**BL2**  
Dark blue  
Blu scuro  
PANTONE 539 U



**AZ1**  
Light blue  
Azzurro  
PANTONE 5503 U



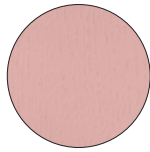
**VE2**  
Dark green  
Verde scuro  
PANTONE 342 U



**VE1**  
Light green  
Verde chiaro  
PANTONE 556 U



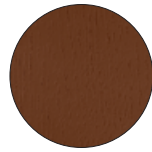
**RB**  
Ruby red  
Rosso rubino  
PANTONE 1805 U



**RA**  
Pink  
Rosa  
PANTONE 693 U



**MO**  
Mahogany  
Mogano  
PANTONE 7603 U



**MC**  
Cognac  
Cognac  
PANTONE 1675 U

Colours are indicative. Pedrali reserves the right to modify or upgrade the product without prior notice.  
I colori sono indicativi. Pedrali si riserva la facoltà di apportare modifiche o migliorie senza alcun preavviso.

## Category A

Fabric / Tessuto



A10



A11



A12



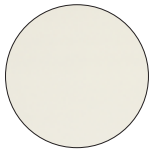
A13



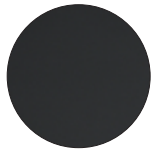
A14

For covering Pasha item 660.8  
Per vestina Pasha art. 660.8

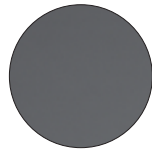
Simil leather / Finta pelle



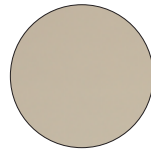
A96



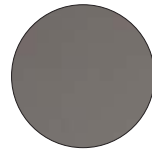
A95



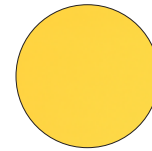
A94



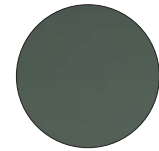
A92



A93



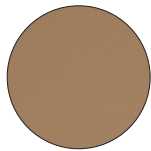
A73



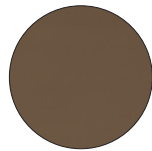
A89



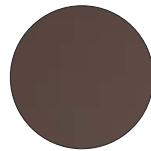
A80



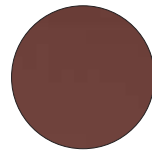
A72



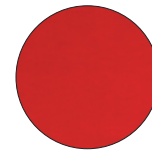
A91



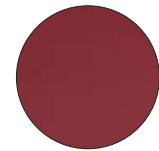
A90



A71



A82



A70

## Category B

Nylon / Nylon



B01



B02

For Island item 795-796-797  
Per Island art. 795-796-797

Colours are indicative. Pedrali reserves the right to modify or upgrade the product without prior notice.  
I colori sono indicativi. Pedrali si riserva la facoltà di apportare modifiche o migliorie senza alcun preavviso.

## Category C

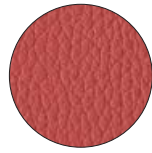
Fire retardant simil leather / Finta pelle ignifuga



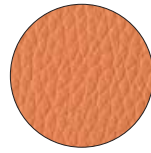
C18



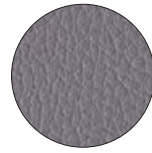
C11



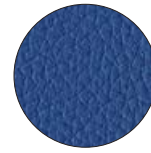
C12



C13



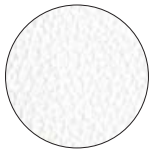
C15



C10



C17



C14



C21



C20



C22



M1

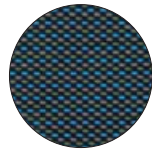
Fabric / Tessuto



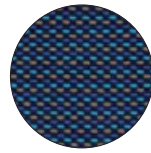
C36



C37



C38



C39

For Noa, Tweet, Wow, Buddy and the following cushions only:  
Social Plus, Blitz, Queen, Pasha, Gliss, Apple and Ikon bench.  
Solo per Noa, Tweet, Wow, Buddy e per i seguenti cuscini:  
Social Plus, Blitz, Queen, Pasha, Gliss, Apple e Ikon bench

Fire retardant simil leather / Finta pelle ignifuga



C45



C46



C47



C48



UNI 9175 CLASSE 1.IM  
EN 1021-2

Colours are indicative. Pedrali reserves the right to modify or upgrade the product without prior notice.  
I colori sono indicativi. Pedrali si riserva la facoltà di apportare modifiche o migliorie senza alcun preavviso.



Fire retardant simil leather / Finta pelle ignifuga



UNI 9175 CLASSE 1.IM  
BS 5852-1 PART 1  
BS 5852 CRIB 5 (C90+C95 only)  
EN 1021-2  
IMO RESOLUTION A.652 (16)  
TB 117



Fire retardant fabric / Tessuto ignifugo

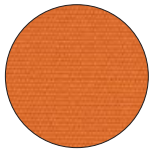


BS EN 1021 1&2 – BS 5852 PART 1 0,1  
TB 117

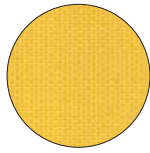


## Category D

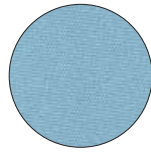
Fabric / Tessuto



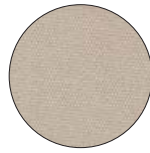
D31



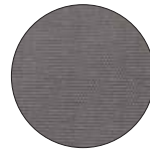
D32



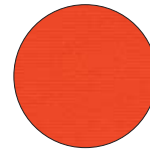
D33



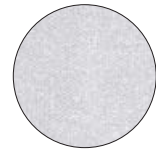
D34



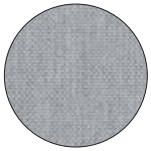
D35



D36



D37



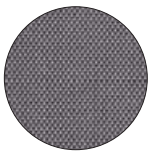
D38



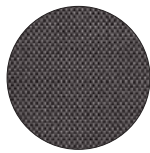
D39

For cushions Intrigo, Nolita, Plus, Plus Air, Reva and Sunset  
Per cuscini Intrigo, Nolita, Plus, Plus Air, Reva e Sunset

Fire retardant fabric / Tessuto ignifugo



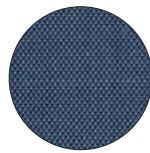
D40



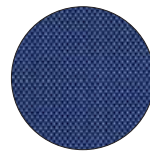
D41



D42



D43



D44



UNI 9175 CLASSE 1.IM  
BS 5852 PART 1 0,1  
BS EN 1021 1&2  
TB 117

## Category E

Velvet / Velluto



E01



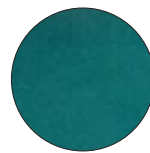
E02



E03



E04



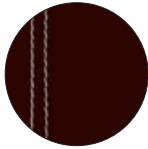
E05

# Category F

Genuine leather / Cuoio naturale



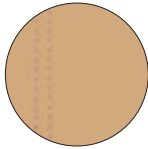
F05



F01



F04



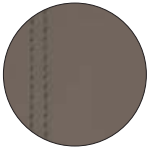
F03



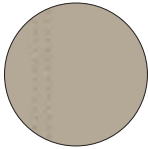
F06



F07



F08



F09

Regenerated leather / Cuoio rigenerato



F11



F12



F13



F17



F18



F19

Colours are indicative. Pedrali reserves the right to modify or upgrade the product without prior notice.  
I colori sono indicativi. Pedrali si riserva la facoltà di apportare modifiche o migliorie senza alcun preavviso.

## Category G

Fire retardant fabric / Tessuto ignifugo



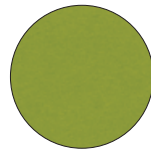
G07



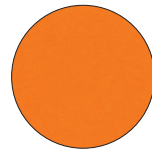
G06



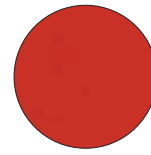
G09



G01



G04



G08



UNI 9175 CLASSE 1.IM  
BS 5852 PART 1 0,1  
BS EN 1021 1&2  
ÖNORM B 3825-B2-3800-Q1 UK  
NF P 92-503 M3  
TB 117

Fire retardant wool / Lana ignifuga



G21



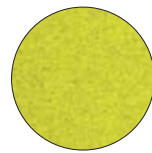
G22



G23



G24

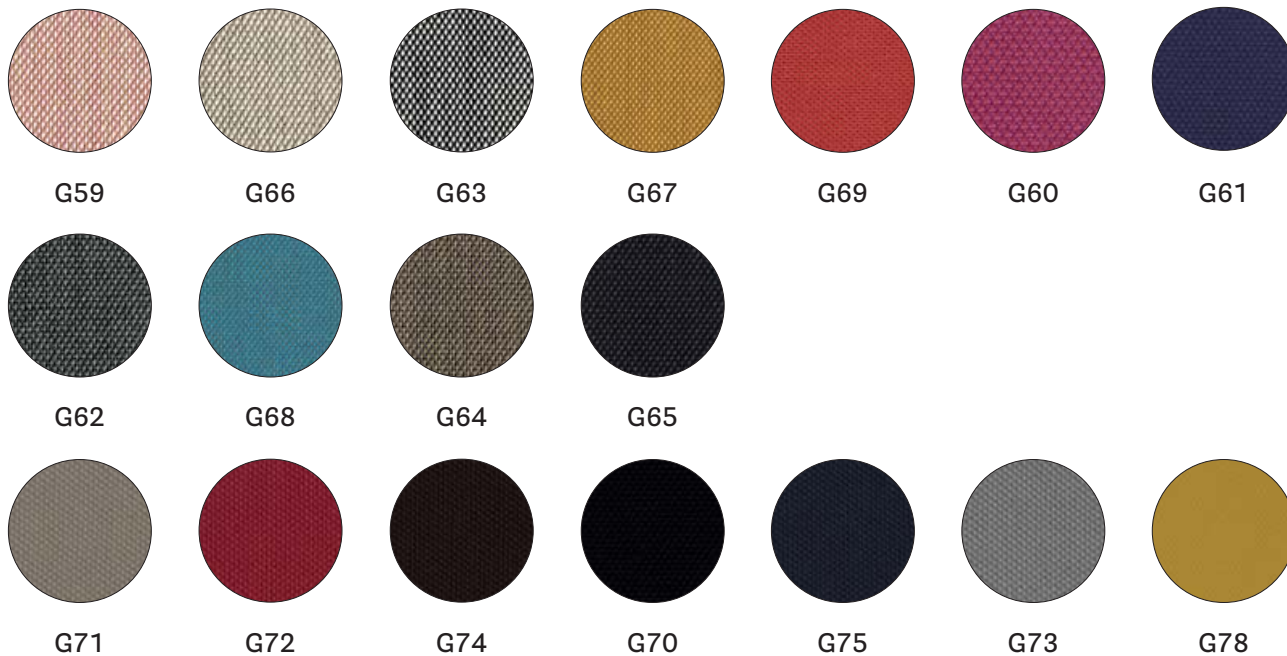


G25



UNI 9175 CLASSE 1.IM  
BS 5852 CRIB 5  
BS 5852 PART 1  
BS 5867 PART 2 TYPE B  
EN 13501, C-S1, D0  
EN 1021 - 1 / 2  
AS/NZS 1530.3  
DIN 4102 B2  
IMO FTP CODE 2010 PART 8  
ÖNORM B1/Q1  
NF D 60 013  
NFPA 260  
TB 117

Fire retardant fabric / Tessuto ignifugo



UNI 9175 CLASSE 1.IM  
 BS 5852 PART 1  
 EN 1021 - 1 / 2  
 AS/NZS 1530.3  
 AS/NZS 3837 CLASS 2  
 DIN 4102 B2  
 IMO FTP CODE 2010 PART 8  
 NF D 60 013  
 NFPA 260  
 ÖNORM B1/Q1  
 TB 117

Fire retardant fabric / Tessuto ignifugo



UNI 9175 CLASSE 1.IM  
 BS 5852 PART 1  
 EN 1021 - 1 / 2  
 DIN 4102 B2  
 IMO FTP CODE 2010 PART 8  
 NF D 60 013  
 NFPA 260  
 ÖNORM B1/Q1  
 TB 117

Colours are indicative. Pedrali reserves the right to modify or upgrade the product without prior notice.  
 I colori sono indicativi. Pedrali si riserva la facoltà di apportare modifiche o migliorie senza alcun preavviso.

Fire retardant wool / Lana ignifuga



G110



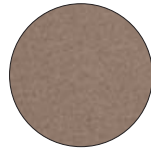
G111



G112



G113



G114



G115



G116



UNI 9175 CLASSE 1.IM  
BS 5852 CRIB 5  
BS 5852 PART 1  
BS 5867 PART 2 TYPE B  
EN 13501, C-S1, D0, GLUED  
EN 1021-1/2  
AS/NZS 1530.3  
DIN 4102 B2  
IMO FTP CODE 2010 PART 8  
ÖNORM B1/Q1  
NF D 60 013  
NFPA 260  
TB 117

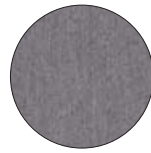
Fire retardant fabric / Tessuto ignifugo



G120



G121

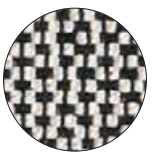


G122

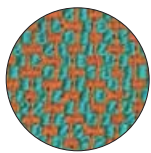


UNI 9175 CLASSE 1.IM  
EN 1021-1/2  
DIN 4102 B2  
IMO FTP CODE 2010 PART 8  
ÖNORM B1/Q1  
NF D 60 013  
NFPA 260  
TB 117

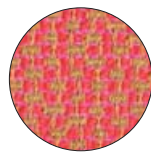
Fire retardant fabric / Tessuto ignifugo



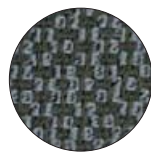
G130



G131



G132



G133



UNI 9175 CLASSE 1.IM  
BS 5852 PART 1  
BS 5852 (PART 2) CRIB 5  
EN 13501-1  
EN 1021 1&2  
DIN 4102-1 B2  
IMO: MED 2014/90/EU  
FAR 25.853 (12 sec.vertical)  
TB 117

## Category H

Fire retardant simil leather / Finta pelle ignifuga

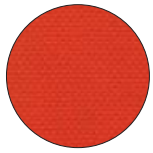


Fire retardant velvet / Velluto ignifugo

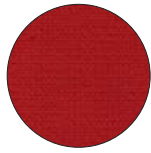


Colours are indicative. Pedrali reserves the right to modify or upgrade the product without prior notice.  
I colori sono indicativi. Pedrali si riserva la facoltà di apportare modifiche o migliorie senza alcun preavviso.

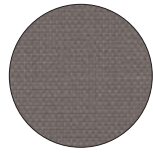
Fire retardant fabric / Tessuto ignifugo



H60



H61



H62



H63

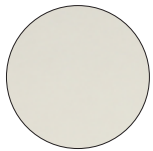


H64

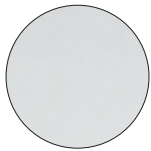


UNI 9175 CLASSE 1.IM  
BS 5852 PART 1 0,1  
BS EN 1021 1&2  
TB 117

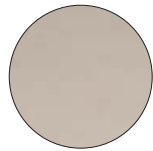
Fire retardant simil leather / Finta pelle ignifuga



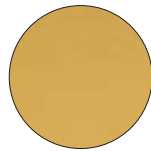
H80



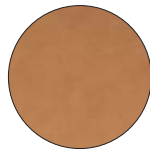
H81



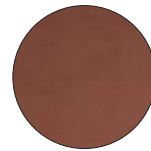
H82



H83



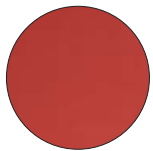
H84



H85



H86



H87



H88



H89



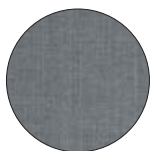
H90



UNI 9175 CLASSE 1.IM  
BS 5852 - 1 PART 1  
BS 5852 CRIB 5  
EN 1021-2  
IMO RESOLUTION A.652 (16)  
TB 117

Category N

Fire retardant fabric / Tessuto ignifugo



N01



N02



N03



N04



N05



BS 5852 PART 1  
EN 1021-1/2  
AS/NZS 3837 CLASS 2  
DIN 4102 B2  
NFPA 260  
TB 117

## Category P

Mid grain leather / Pelle mezzo fiore

---



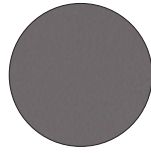
PBI



PSA



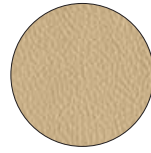
PGC



PGA



PGR



PBE



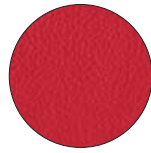
PTA



PMA



PNE



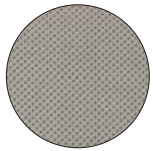
PRO



PTE

Perforated mid grain leather / Pelle mezzo fiore traforata

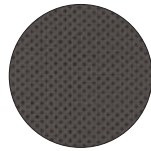
---



PGCF



PGRF



PMAF



PTEF

For Vic and Vic Metal  
Per Vic e Vic Metal

Mid grain leather / Pelle mezzo fiore

---



PBS



PCO



PMS



PVE

For Malmö 296, 391, 396, 242 and 246  
Per Malmö 296, 391, 396, 242 e 246